



ALBERT AMOR LTD.



**THE CREED COLLECTION OF PLYMOUTH
AND BRISTOL PORCELAIN, PART TWO**

37 BURY STREET, ST JAMES'S, LONDON SW1Y 6AU



Monday 18th March - Wednesday 27th March 2024

10.00am - 5.00pm Monday to Friday
Saturday and Sunday by appointment

TELEPHONE: 0207 930 2444

WWW.ALBERTAMOR.CO.UK

FOREWORD

I am pleased to present the second selling exhibition catalogue for Plymouth and Bristol porcelain from the Creed Collection, this time focusing on polychrome decoration.

We were delighted with the interest generated by our Autumn 2023 selling exhibition of blue and white pieces from the collection, with sales to new and existing clients, and also acquisitions for public collections.

The present catalogue includes many pieces with an illustrious provenance – Trapnell of course, and the famous Albert Amor Exhibition of 1912, Peter Stephens, and his exhibition here, Frank Arnold and also the F S Mackenna Collection.

Of particular note are the large Plymouth baluster shaped mug – number 59 – with exceptionally fine figure painting in Chinese Export style, and the rare Bristol pierced oval centre dish, after a Worcester original, number 36. There are examples from the many named Bristol services, some with crests or initials, including the Mark Harford Service, the Plumer Service, the Pitts Service, and the Chough Service.

For me, the variety of Bristol milk jug forms in this catalogue is also particularly appealing – such as number 72, the rare footed jug, formerly in the Godden Reference Collection, and number 19 the rare small baluster shaped jug. Teapots include the well documented example formerly in the Shand Kydd Collection, with exceptional purple monochrome painting, and the example finely painted in Chinese famille verte style, number 29.

There are also pieces from two of the Bristol services with strong historical associations – a bowl, a milk jug and a coffee cup and saucer in the Nelson pattern, and a coffee cup and saucer from the Gainsborough Service.

Pieces that we cannot find recorded elsewhere, and so which may well be unique include the oval Bristol butter tub, with fox mask handles, number 32, and the extremely rare Turkish inspired yellow ground coffee pot and cover.

All pieces are for sale from the publication of this catalogue. Please do contact me if I can provide any further details.

Mark Law

London, February 2024



1.
A Plymouth baluster shaped mug, with notched loop handle, painted in sepia with the crest of Sir John Nicholls, and monogram 'JN' in dry blue enamel, within an elaborate 'C' scroll and leaf cartouche, flanked by coloured sprays of flowers and leaves, beneath a gilt pendant flower head and scroll band, 5 ½" high, circa 1770, painted tin mark in puce

Provenance; Dr Lidiard Wilson Collection, sold Sotheby's, London, 20th May 1938, lot 76
 Sotheby's. London, 28th January 1964, lot 398
 Franklin Arnold Collection, number E459
 With Simon Spero, acquired 26th April 2005

Illustrated; F S Mackenna, Cookworthy's Plymouth and Bristol Porcelain, figure 55



2.

A Bristol small globular teapot and cover, with loop handle, fluted and leaf moulded spout and pointed knob, painted in coloured enamels with sprays of flowers and leaves, and scattered flowers, within iron red interlinked borders, 4 ½" high, circa 1770, no mark

Provenance; With Simon Spero, acquired 8th November 2002



3.

A Bristol ogee shaped coffee cup, with ear shaped handle, unusually painted in puce with a broad interlinked diagonal band, beneath a blue dotted border, puce line rim, 2 ¼" high, circa 1772, pseudo Meissen underglaze blue crossed swords mark, and overpainted in blue with X mark

See Albert Amor, The Trapnell Collection, 1912, number 318, for tea bowls and saucers in this pattern



4.
A Bristol leaf shaped pickle dish, boldly painted in coloured enamels with a purple tulip and other flowers, and with scattered sprigs, 4 1/8" wide, circa 1772, pseudo Meissen underglaze blue crossed swords mark and numeral 17 in blue

Provenance; Bonhams, London, 5th December 2007



5.

A Bristol pinecone moulded coffee cup, with loop handle, painted in puce monochrome with flower sprigs, beneath a wavy green band, the interior with a gilt dentil band, 2 ³/₈" high, circa 1775, no mark



6.

A Bristol ovoid milk jug, with crabstock loop handle and stiff leaf moulded lip, finely painted in coloured enamels in Campden Service style with sprays of flowers and leaves, beneath a puce scale band, with green and gilt cartouches of leaves and pendant flowers, 4 ¹/₄" high, circa 1775, no mark

Provenance; Westen Taylor Collection
With Stockspring Antiques, acquired 17th November 2008



7.
A Bristol saucer, finely painted in Chinese Export famille rose palette with a basket of flowers, within a flower panelled puce diaper border, 5 1/8" diameter, circa 1775, blue painted X mark and numeral 7

Provenance; With Simon Spero, acquired 14th November 2007

See Albert Amor, *The Trapnell Collection*, 1912, number 477, for a teapot and cover in this pattern



8.
An unusual Bristol tall coffee or chocolate cup, with flared rim and loop handle, painted in puce monochrome with flower sprigs, beneath a wavy green band, the interior with an iron red dentil band, 2 3/4" high, circa 1775, no mark



9.

A Plymouth oval sauceboat, the 'S' scroll handle with leaf moulded thumb piece, unusually painted in coloured enamels with elegant figures in European landscapes, within leaf moulded cartouches, on a fluted ground, 7 ¼" long, circa 1772, no mark

Provenance; With Simon Spero, acquired 31st July 2007



10.

A Bristol tea bowl and saucer, from the Mark Harford Service, each piece painted in purple monochrome with landscape roundels, within a gilt band, the border with iron red flowers and leaves, and puce 'C' scrolls, entwined with a gilt band, gilt dentil rims, circa 1772, no marks

Provenance; Christies, London, 23rd February 1976, lot 132 (a pair)
With Albert Amor Limited
Fulford Collection, sold Bonhams, London, 6th June 2007, lot 360



11.
A Bristol ogee shaped sucrier and cover, with pinecone knob, painted in green and iron red with laurel swags, suspended from gilt flower head roundels and bands, within stiff leaf and gilt dentil borders, 4 $\frac{3}{4}$ " high, circa 1775, blue painted X mark



12.
A Bristol chocolate cup, cover and a stand, with unusual fruit knob, the cup with two ear shaped handles, painted in green monochrome with swags of flowers and leaves, suspended from gilt loops, gilt dentil and line border, 4 $\frac{1}{2}$ " high overall, circa 1775, blue painted X marks

See Frank Hurlbutt, Bristol Porcelain, plate 46, for another example of this form



13.

An extremely rare Bristol sander, of waisted form, painted in coloured enamels with flower sprigs, beneath a puce and green entwined scroll and ribbon band, within simple iron red borders, 2 ¾" high, circa 1772, no mark

Provenance; Wallace Elliot Collection, sold Sothebys, London, 26th May 1938, lot 433
 Frank Arnold Collection
 F S Mackenna Collection
 Sothebys, London, 12th November 1963, lot 196 (bought Amor)
 Peter Stephens Collection
 Simon Spero, 2005 Exhibition, number 23

Exhibited; Bristol Porcelain Bicentenary Exhibition, 1770-1970, number 128



- 14.**
A Bristol coffee cup, with loop handle, painted in coloured enamels with a spray of flowers and leaves, and scattered flowers, the interior rim with an iron red loop and dot band, 2 ½" high, circa 1775, no mark



- 15.**
A Bristol large baluster shaped mug, with notched loop handle, decorated in gilt with scrolling leaves, entwined with two horizontal gilt bands, beneath a gilt looped band, 6 ¼" high, circa 1772, no mark



16.

A Bristol slender ovoid milk jug, with crabstock loop handle and stiff leaf moulded lip, decorated in puce and gilt with interlinked roundel and scroll bands, gilt dentil rim, 4 1/4" high, circa 1772, blue painted X mark

See Albert Amor, *The Trapnell Collection*, 1912, number 105, for a teapot and cover in this pattern



17.

A Bristol small oval butter boat, with loop handle, crisply moulded in relief with two clusters of fruits and leaves, and painted in puce monochrome with flowers and leaves, within puce line borders, 4 1/4" long, circa 1770, no mark



18.
A rare Bristol shell shaped salt, the interior painted in coloured enamels with a spray of flowers and leaves and scattered flowers, on three claw and ball feet, 5 ¼" wide, circa 1775, blue painted X mark and numeral 6.

Provenance; Albert Amor Limited, acquired 17th March 2004



19.

A rare Bristol small baluster shaped cream jug, with crabstock loop handle and shaped rim, painted in coloured enamels with a bold spray of flowers and leaves, and scattered flowers, beneath an iron red scroll band, brown line rim, 3" high, circa 1775, blue painted X mark

With Sally and David March, acquired 21st December 2004



20.

A Plymouth waived beaker vase, finely painted in coloured enamels with a spray of flowers and leaves, scattered flowers and a butterfly, within gilt line borders, 7" high, circa 1770, painted tin mark in gilt

Provenance; L B Krouff Collection
Simon Spero, 1995 Exhibition, number 16



21.

A Bristol baluster shaped sparrow beak cream jug, with loop handle, painted in coloured enamels with a spray of flowers and leaves, and scattered flowers, brown line rim, 3” high, circa 1775, no mark



22.

A rare Bristol oval spoon tray, painted in coloured enamels with scattered flowers and leaves, within a gilt band entwined with flowers and leaves, gilt dentil rim, 6 ½” wide, circa 1772, no mark



23.
A Bristol saucer dish, painted in coloured enamels with scattered flowers and leaves, within a gilt border, panelled with leaves, gilt dentil rim, 8 ¼" diameter, circa 1772, no mark



24.
A Bristol saucer, painted in coloured enamels in Chinese Export style with a mother and two children before a tree, in a fenced garden, within an iron red line and scroll border, 5" diameter, circa 1772, blue painted B mark and numeral 6



25.

A Bristol coffee cup, with loop handle, painted in coloured enamels in Chinese Export style with three figures in a continuous landscape with a pine tree, the interior rim with an iron red interlinked band, gilt line rim, 2 ½" high, circa 1772, no mark



26.

A Bristol round bowl, the exterior painted in coloured enamels with two sprays of flowers and leaves, and scattered flowers, beneath a brown line rim, 5 ¾" diameter, circa 1760, blue painted B mark



27.

A Bristol tea cup and saucer, from the Ludlow of Campden Service, the cup with entwined loop handle, each piece painted with the arms of Daniel Ludlow of Campden, within a gilt scroll cartouche, and with flower sprays, the borders painted with flowers, suspended from a puce, green and gilt diaper panelled band, gilt dentil rims, circa 1775, no mark



28.

A Bristol baluster shaped sparrow beak cream jug, with loop handle, painted in coloured enamels in Chinese Export style with three figures playing games in a wooded garden, beneath a brown line rim, 3 ½" high, circa 1772, pseudo Meissen underglaze blue crossed swords mark

Provenance; Steppes Hill Farm Antiques, acquired 25th January 2005



29.

A Bristol ogee shaped teapot and cover, with pointed knop, the ear shaped handle with leaf moulded thumb piece, finely painted in Chinese famille verte palette with two women and a child in a garden, before a pine tree, within iron red loop and dot borders, 6" high, circa 1775, no mark

Provenance; Frank Arnold Collection
With Roderick Jellicoe, acquired 1st October 2006

See F S Mackenna, Plymouth and Bristol Porcelain, number 52, for a Plymouth coffee pot, formerly in the Aldred Trapnell Collection, painted with this pattern



30.
A Plymouth small 'U' shaped mug, with notched loop handle, painted in coloured enamels with two exotic birds in a wooded landscape, beneath a gilt line rim, 3 ½" high, circa 1770, red painted tin mark

This distinctive style of painting is attributed to the celebrated French painter 'Mons Soqui', now believed to be Michel Soquet, who also worked at Vincennes and Sevres



31.

A rare Bristol small ogee shaped tea canister, with short straight neck, painted in coloured enamels with two sprays of flowers and leaves, and scattered flowers, beneath a gilt leaf scroll band, with iron red scale panels and green leaves, 2 ½" high, circa 1772, no mark

Provenance; Sothebys, New York, 15th October 1996, part lot 185



32.

A rare Bristol fluted oval butter tub, with two crisply modelled fox mask handles, painted in green and iron red with laurel garlands, suspended from a gilt band, beneath laurel and gilt dentil borders, 7" wide, circa 1775, blue painted X and II marks

Provenance; M Warburton Collection
With Simon Spero, acquired 21st September 2016



33.

A rare Bristol ogee shaped chocolate cup and trembleuse saucer, the cup with laurel moulded loop handle, particularly finely painted in coloured enamels with sprays of flowers and leaves, and scattered flowers, within gilt dentil borders, 5 ½" diameter overall, circa 1775, B7 mark in blue enamel

Provenance; Tryhorn Collection



34.
A Plymouth baluster shaped mug, with notched loop handle, painted in coloured enamels with an exotic bird in a wooded landscape, and another bird in flight, beneath a gilt interlinked band, 5 ½" high, circa 1770, red painted tin mark

This distinctive style of painting is attributed to the celebrated French painter 'Mons Soqui', now believed to be Michel Soquet, who also worked at Vincennes and Sevres



35.

A Bristol fluted round bowl, from the Nelson Service, painted in coloured enamels with flower sprays and scattered flowers, beneath a geometric blue ribbon and gilt line border, and gilt dentil rim, the interior painted with a flower spray, 5 ½" diameter, circa

Provenance; Alfred Trapnell Collection
Albert Amor Limited, The Alfred Trapnell Collection
Sothebys London, 9th March 1954, lot 47
Peter Stephens Collection, number 3

Exhibited; Bristol Porcelain Bicentenary Exhibition, 1970, number 97c

See Albert Amor, *The Trapnell Collection*, 1912, numbers 182-189, for pieces from this service, owned by Admiral Lord Nelson, and by descent to Hilaire, Countess Nelson. It was then in the Firbank Collection



36.
A rare Bristol oval centre dish, after a Worcester original, boldly painted in coloured enamels with three exotic birds and trees, and scattered flowers, the pierced trellis border moulded with four shells, picked out in puce and gilt, gilt line rim, 13 ½" wide, circa 1775, no mark

Provenance; Peter Stephens Collection, number 49
Bonhams London, 7th June 2006, lot 211

Exhibited; Bristol Porcelain Bicentenary Exhibition, 1970, number 118

See F S Mackenna, *Cookworthy's Plymouth and Bristol Porcelain*, figure 67, for a Plymouth flower painted centre dish of this form





37.

A Plymouth baluster shaped mug, with notched loop handle, painted in coloured enamels with a bold spray of flowers and leaves, and scattered flowers, beneath an iron red and gilt interlinked band, 6 ¼" high, circa 1770, no mark



38.

A Bristol coffee cup, with loop handle, boldly painted in coloured enamels in Chinese style with two figures flanking a stand, in a garden, beneath a brown line rim, the interior with an iron red loop and dot band, 2 ¼" high, circa 1770, B. mark in blue enamel



39.

A Plymouth coffee cup, with slightly everted rim and simple loop handle, painted in Chinese famille verte palette with growing flowers and leaves, 2 ½" high, circa 1770, no mark



40.

A Bristol cylindrical toilet pot and cover, with fruit knob, painted in coloured enamels with swags of flowers and leaves, suspended from gilt bands, within gilt dentil borders, 3 ½" high, circa 1772-75, no mark

Provenance; Alfred Trapnell Collection



41.
A Bristol coffee cup and saucer, from the Gainsborough Service, the cup with crabstock handle, painted in coloured enamels with sprays of flowers and leaves, within scrolling bands of laurel, flowers and leaves entwined with gilt bands, gilt dentil borders, circa 1772, no marks

Provenance; Sotheby's London, 14th February 1984, part lot 111

See Albert Amor, *The Trapnell Collection*, 1912, numbers 373 - 380, for further pieces from this service



42.
A rare pair of Plymouth small figures of garlanded putti, one playing a lyre and the other a lute, picked out in puce, brown and yellow, and seated before floral bodge, on leaf moulded mound base, 4" high, circa 1770, no marks

Provenance; Fulford Collection



43.

A Bristol ovoid milk jug, with crabstock handle and leaf moulded lip, painted in coloured enamels with festoons of flowers and leaves, suspended from gilt 'C' and leaf scrolls, stiff blue leaves and laurel garlands, above a puce, blue and gilt interlinked band, gilt dentil rim, 4 ½" high, circa 1772, numeral 2 mark in gilt



44.

A Plymouth group of two garlanded putti, one holding a tub of flowers, and the other with a ribbon, decorated in coloured enamels, the scroll moulded mound base applied with flowers and leaves, and picked out in puce, 5 ½" high, circa 1770, no mark



45.

A rare Bristol tea bowl and saucer, from the William Cowles Service, each piece finely painted in coloured enamels with a bold spray of flowers and leaves, and scattered flowers, and with conjoined initials in gilt 'WC', within a laurel roundel, gilt dentil rims, circa 1774, no marks

From the service ordered by William Cowles of 33 Castle Green, Bristol, who was a Quaker and a friend of both Champion and Harford. The majority of this service is in the Lady Charlotte Schreiber Collection, in the Victoria and Albert Museum

See the Bristol Porcelain Bicentenary Exhibition, 1970, number 91c, for another tea bowl and saucer from this service



46.

A Bristol tea cup and saucer, from the Plumer Service, each piece with initial P in pink roses and gilt, within a tooled oval gilt panel, and with grisaille portrait medallions, within green, iron red and gilt laurel and leaf scroll borders, gilt dentil rims, circa 1774-75, blue painted X marks

Provenance; From the service made for William Plumer, MP, member of parliament for Hertford for forty years.

See F S Mackenna, Plymouth and Bristol Porcelain, number 29, for the sucrier and cover from this service



47.

A Bristol baluster shaped sparrow beak milk jug, with loop handle, painted in coloured enamels with a spray of flowers and leaves, and scattered flowers, on a gilt striped ground, the rim with a gilt flower head and 'C' scroll band, 3 ¾" high, circa 1775, blue painted X mark

See Albert Amor, The Trapnell Collection, 1912, number 513, for a teapot and cover in this pattern



48.

A Bristol baluster shaped sparrow beak jug, with loop handle, painted in Chinese famille rose palette with a Chinese figure with parasol, in a garden, and a boy playing a game, beneath an iron red loop and dot band, brown line rim, 3 ½" high, circa 1775, blue painted X mark

Provenance; Godden Reference Collection

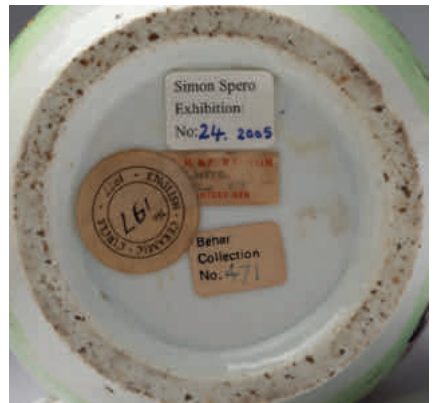


49.

A superb Plymouth large baluster shaped mug, with notched loop handle, brilliantly painted in Chinese famille rose palette with six elegant figures in a garden, flanked by vases of flowers on stands, beneath an iron red loop and dot band, 6" high, circa 1770, no mark

Provenance; Sothebys, London 21st November 1967, lot 175
Christies, London 11th March 1974, lot 87
Edward Behar Collection, sold Christies, London, 21st April
1980, lot 123
Christies, London 2nd June 1986, lot 270
Simon Spero, 2005 Exhibition, number 24

Exhibited; English Ceramic Circle Loan Exhibition, 1977, number 197





50.

A Bristol coffee can and saucer, the can with harebell moulded scroll handle, painted in pink with scale bands, within green laurel borders, gilt dentil rims, circa 1775, blue painted X marks

Provenance; Peter Stephens Collection, acquired from Albert Amor September 1955

Exhibited; Bristol Porcelain Bicentenary Exhibition, 1970, number 171

See Albert Amor Limited, The Alfred Trapnell Collection, 1912, numbers 27 and 28 for similar examples



51.

A Bristol oval sauce boat, the 'S' scroll handle with leaf moulded thumb piece, moulded in relief to both sides with a spray of flowers and leaves, boldly picked out in coloured enamels, within scroll moulded borders, beneath a brown line rim, 7 ¼" long, circa 1772, no mark

Provenance; Fulford Collection



52.
An unusual Bristol cylindrical mug, with notched loop handle, painted in two shades of green with the initials 'A L', beneath garlands of flowers and leaves, suspended from green loops, green line rim, 5 ¼" high, circa 1775, no mark



53.
A Bristol ogee shaped coffee cup, with harebell moulded scroll handle, painted in coloured enamels with a flower spray and scattered flowers, within gilt line and dentil borders, 2 ¾" high, circa 1775, blue painted X and numeral 18



54.

A Bristol ogee shaped sucrier and cover, with flower bud and leaf knob, from the Pitts Service, painted with the Pitts armorial, within a shield shaped cartouche, and orange and gilt entwined bands, gilt dentil rims, 4" high, circa 1775, no mark

Provenance; With Simon Spero, acquired 7th February 2005

Exhibited; Bristol Porcelain Bicentenary Exhibition, 1970, number 850



55.

A Bristol round bowl, the exterior painted in Chinese famille rose style with three figures in a garden, in a continuous landscape, beneath a brown line rim, the interior painted with an iron red interlinked band, 5 3/4" diameter, circa 1775, blue painted X and numeral 7 marks



- 56.**
An unusual Bristol small ogee shaped oval sauce boat, with harebell moulded scroll handle, moulded in relief with laurel swags, picked out in green, and suspended from puce rosettes, above a stiff leaf moulded band, brown line rim, the interior painted in iron red with a stiff leaf and looped band, 5 ½" long, circa 1775, no mark

Provenance; With David and Sally March, acquired 21st December 2004



- 57.**
A rare Bristol hexagonal large teapot stand, painted in coloured enamels with a simple flower spray, within a flower garland, and with scattered flowers and leaves, the fluted border with a further band of flowers and leaves, 6 ½" wide, circa 1775, no mark

Provenance; Bonhams, London, 8th April 2009, lot 132



58.

An extremely rare Plymouth baluster shaped castor, boldly painted in coloured enamels in Chinese famille verte palette with a mother and child in a continuous landscape with vases and a stand, beneath an iron red diaper band, 5 ¾" high, circa 1770, no mark

Provenance; Mrs D C Fraiser Collection, Sothebys London, 16th December 1975, lot 87
With Simon Spero, acquired 31st July 2007



59.

A Bristol ogee shaped 'Nelson Pattern' milk jug, with harebell moulded scroll handle, painted in coloured enamels with a spray of flowers and leaves, and scattered flowers, beneath a scrolling blue ribbon, entwined with three gilt horizontal bands, gilt dentil rim, 4 ½" high, circa 1772, blue painted X mark and numeral 3

See Albert Amor, *The Trapnell Collection*, 1912, numbers 182-189, for pieces from this service, owned by Admiral Lord Nelson, and by descent to Hilaire, Countess Nelson. It was then in the Firbank Collection



60.

A Plymouth baluster shaped mug, with notched loop handle, painted in famille verte palette with the Dragons in Compartments pattern, 4 ¼" high, circa 1770, painted tin mark in iron red

Provenance; Sotheby's London, 18th October 1988, lot 638
With Simon Spero, acquired 11th May 2005



61.

A Plymouth inverted baluster shaped vase, with slightly flared neck, brightly painted in coloured enamels with a spray of flowers and leaves, a smaller spray, leaf sprigs and a butterfly, within simple gilt borders, 8 ¼" high, circa 1770, painted tin mark in gilt



62.

A Plymouth figure of a young boy, seated on a tree-stump, playing a pipe and a drum, and decorated in coloured enamels, the high scroll moulded mound base picked out in puce, 5 ½" high, circa 1770, no mark

Provenance; Mr and Mrs A E (Jimmy) Jones Collection

With Simon Spero, acquired 26th April 2005

63.

A Plymouth figure of a female toper, reclining against a tree-stump, a barrel under her left arm, and a glass in her right hand, decorated in coloured enamels, the high scroll moulded base picked out in puce, 5 ¾" high, circa 1770, no mark

Provenance; With Simon Spero, acquired 26th April 2005



64.

A Plymouth fluted coffee cup, with scroll handle, painted in Chinese famille verte style with growing flowers and leaves, 2 ½" high, circa 1770, no mark



65.

A rare Bristol small round part fluted bowl, painted in Chinese famille rose style with three figures in a garden, beneath a brown line rim, the interior with an iron red interlinked band, 4 ¼" diameter, circa 1772, blue painted crossed swords mark and blue X

Provenance; F Brayshaw Gillespy Collection
T L Taylor Collection

Illustrated; Champion's Bristol, figure 9



66. A Bristol small baluster shaped coffee pot and a domed cover, with crabstock handle, fluted spout and flower and leaf knop, painted in coloured enamels with two sprays of flowers and leaves, and scattered flowers, 6 $\frac{3}{4}$ " high, circa 1772, no mark



67.

An unusual Bristol round plate, with slightly fluted border, painted in coloured enamels with a spray of flowers and leaves, and scattered flowers, brown line rim, 9 ¼" diameter, circa 1772, blue painted X mark and numeral 17

Provenance; With Simon Spero, acquired 7th February 2005



68.

A Bristol baluster shaped custard cup and cover, with harebell moulded flattened loop handle and ball shaped knob, decorated in gilt with simple flower sprigs, within gilt dentil and line borders, 2 ¾" high, circa 1775, blue painted X mark

Provenance; The late Mrs O J Fortescue, sold Christie's London, 20th June 1977, part lot 130 (a set of thirteen)



69.
A Plymouth large baluster shaped jug, with notched loop handle, painted in Japanese Kakiemon palette with growing flowers and leaves, flanked by flower sprays, beneath a flower and leaf scroll band, brown line rim, 7 ½" high, circa 1770, painted tin mark in iron red

Provenance; Fulford Collection



70.

A Bristol coffee cup, with ear shaped handle, painted in coloured enamels with a band of flowers and leaves, above a pinecone moulded ground, 2 $\frac{5}{8}$ " high, circa 1775, no mark



71.

A pair of Bristol small leaf shaped sauce boats, each with stalk loop handle, painted in coloured enamels with flowers and leaves, beneath a puce feuille de choux border, each foot with an iron red interlinked band, 5 $\frac{1}{2}$ " long, circa 1772, no marks



72.

A rare Bristol baluster shaped sparrow beak milk jug, the 'S' scroll handle with scroll thumbpiece, painted in puce monochrome with scattered flowers, on a pinecone moulded ground, beneath a flower and 'C' scroll band, the spreading foot painted with a looped band, 3 3/4" high, circa 172, no mark

Provenance; Godden Reference Collection

On his collection label, Geoffrey Godden has written 'perfect Bristol'



73.

A Bristol large cylindrical mug, with notched loop handle, finely painted in coloured enamels with an exotic bird in a landscape, flanked by naturalistic birds in branches, the reverse painted with two birds in flight, gilt line rim, 5 ¼" high, circa 1775, no mark



74.
A Bristol ogee shaped coffee cup and saucer, the cup with harebell moulded scroll handle, painted in coloured enamels with swags of flowers and leaves, suspended from gilt bands, gilt dentil borders, circa 1775, blue painted X and numeral 5 marks



75.
A rare Bristol baluster shaped finger bowl, painted in coloured enamels with a spray of flowers and leaves, and scattered flowers, the barbed rim with a brown band, 3 1/8" high, circa 1772, no mark



76.

A rare Bristol lobed oval spoon tray, painted in coloured enamels with flower sprigs, within a puce interlinked flower head band, suspending green leaves, and iron red saw-tooth rim, 6" wide, circa 1775, no mark

Provenance; Peter Stephens Collection
Barbara Leake Collection, sold Bonhams, 12th March 2008, lot 263

Exhibited; Albert Amor Limited, The Peter Stephens Collection, 1978, number 26



77.

A Plymouth oval sauce boat, with 'C' scroll handle, with scroll thumbpiece, painted in Japanese Kakiemon style with flowers and leaves, within 'C' scroll moulded cartouches, beneath a scroll moulded rim, on spreading foot, the interior painted with a flower to the base and the lip, 5 1/4" long, circa 1770, painted tin mark in iron red

Provenance; Sotheby's, Olympia, 13th April 2006, lot 163



- 78.**
 A Bristol oval sauce boat, with harebell moulded scroll handle, painted in coloured enamels with a flower spray and scattered flowers, beneath a boldly shaped moulded rim, the base with a stiff leaf moulded band, and leaf moulded spreading foot, 5" long, circa 1770, blue painted X mark and numeral 10.



- 79.**
 A Bristol ogee shaped teacup, coffee cup and saucer, from the Chough Service, each piece painted with a bird crest, with leaves in its beak, probably for Tothill of Peamore, Devon, within oval cartouches, and with sepia profile medallions, united by laurel swags, within gilt tooled, leaf and dentil bands, circa 1774-75, blue painted X marks

Provenance; Fulford Collection

See F S Mackenna, Plymouth and Bristol Porcelain, page 68, plate 27, for a plate from this service



80.

An extremely rare Plymouth yellow ground slender baluster shaped coffee pot and domed cover, with notched loop handle and pointed knob, painted in purple with flowers and leaves, within leaf scroll and ribbon borders, 10" high, circa 1770, no mark

Provenance; Christie's London, 23rd February 1987, lot 294
Godden Reference Collection
Simon Spero, 2005 Exhibition, number 25



81.

A Bristol pierced oval basket, in Worcester style, the two green glazed spiral twist loop handles with applied flower and leaf terminals, painted in coloured enamels with a spray of flowers and leaves, and scattered flowers, within a purple loop and dot border, the exterior applied with flower heads, picked out in blue and yellow, 8 ½" wide overall, circa 1775, no mark

Provenance; With Simon Spero, acquired 1st November 2013



82.

A Bristol ogee shaped sucrier and cover, with flower and leaf knob, painted in coloured enamels in Campden Service style, with flower sprays, within puce scale borders, with green and gilt cartouches of leaves and pendant flowers, 4" high, circa 1775, no mark

Provenance; Taylor Collection



83.

A Bristol 'Nelson Pattern' fluted teacup and saucer, the cup with harebell moulded scroll handle, painted in coloured enamels with scattered flowers and leaves, within scrolling blue ribbons, entwined with three gilt bands, gilt dentil rims, circa 1772, blue painted X mark and numeral 5

See Albert Amor, *The Trapnell Collection*, 1912, numbers 182-189, for pieces from this service, owned by Admiral Lord Nelson, and by descent to Hilaire, Countess Nelson. It was then in the Firbank Collection



84.

An extremely rare Bristol miniature baluster shaped coffee pot, with ear shaped handle, painted in puce and green with scattered flowers and leaves, beneath a puce scroll band, with green pendant leaves, 3 1/4" high, circa 1772, blue crossed swords mark painted over in brown

Provenance; Simon Spero Collection



85.
A Bristol ogee shaped milk jug, with harebell moulded scroll handle, painted in green and iron red with laurel swags, suspended from gilt roundels, within gilt line and green laurel borders, gilt dentil rim, 4" high, circa 1775, blue painted X mark and numeral 7



86.

A fine Bristol ogee shaped teapot and cover, with flower and leaf knob, the ear shaped handle with leaf moulded thumbpiece, very finely painted in purple monochrome with figures and boats in estuary landscapes, within orange and gilt scroll and ribbon borders, gilt dentil rims, 6" high, circa 1775, no mark

Provenance; Alfred Trapnell Collection, number 130
 Sharp Collection
 The Frances Shand Kydd Collection
 Simon Spero, 2004 Exhibition, number 21

Exhibited; English Ceramic Circle, Commemorative Exhibition, 1977, number 200
 See F S Mackenna, Plymouth and Bristol Porcelain, page 110, number 69, for the spoon tray from this celebrated service



- 87.**
A Bristol small oval butter boat, with loop handle, crisply moulded in relief with two clusters of fruit and leaves, and painted in coloured enamels with a flower spray and scattered flowers and leaves, 4 ¼" long, circa 1770, no mark

Provenance; Simpson Collection, number 307



- 88.**
A Bristol small oval sauce boat, with 'C' scroll loop handle, painted in coloured enamels with two sprays of flowers and leaves, and scattered flowers, beneath a scroll moulded rim, painted with a brown band, 5" long, circa 1775, no mark



89.

A Plymouth hexagonal sauce boat, the angular scroll handle with shell moulded upper terminal, painted in Japanese Kakiemon palette with flowers and leaves, within 'C' scroll moulded cartouches, the 'melting ice' moulded rim with a brown band, 5 ¾" long, circa 1770, no mark



90.

A Bristol barrel shaped teapot and cover, with ball knob, the ear shaped handle with leaf moulded thumbpiece, painted in coloured enamels in Chinese famille rose style with three children playing games in a wooded landscape, within iron red loop and dot borders, 4 ¼" high, circa 1775, blue painted X mark



91.

A Bristol small ogee shaped cream jug, with harebell moulded scroll handle, painted in coloured enamels with swags of flowers and leaves, above a broad pinecone moulded band, 3 ¼" high, circa 1775, blue painted X mark and numeral 14



92.

A Plymouth oval sauce boat, with 'C' scroll handle, with scroll thumbpiece, painted in puce monochrome with flowers and leaves, within 'C' scroll moulded cartouches, beneath a scroll moulded rim, on spreading foot, the lip painted with a flower head and leaf scrolls, 5 ½" long, circa 1770, no mark

Provenance; Albert Amor Limited, acquired 21st May 2005





WWW.ALBERTAMOR.CO.UK