



WWW.ALBERTAMOR.CO.UK

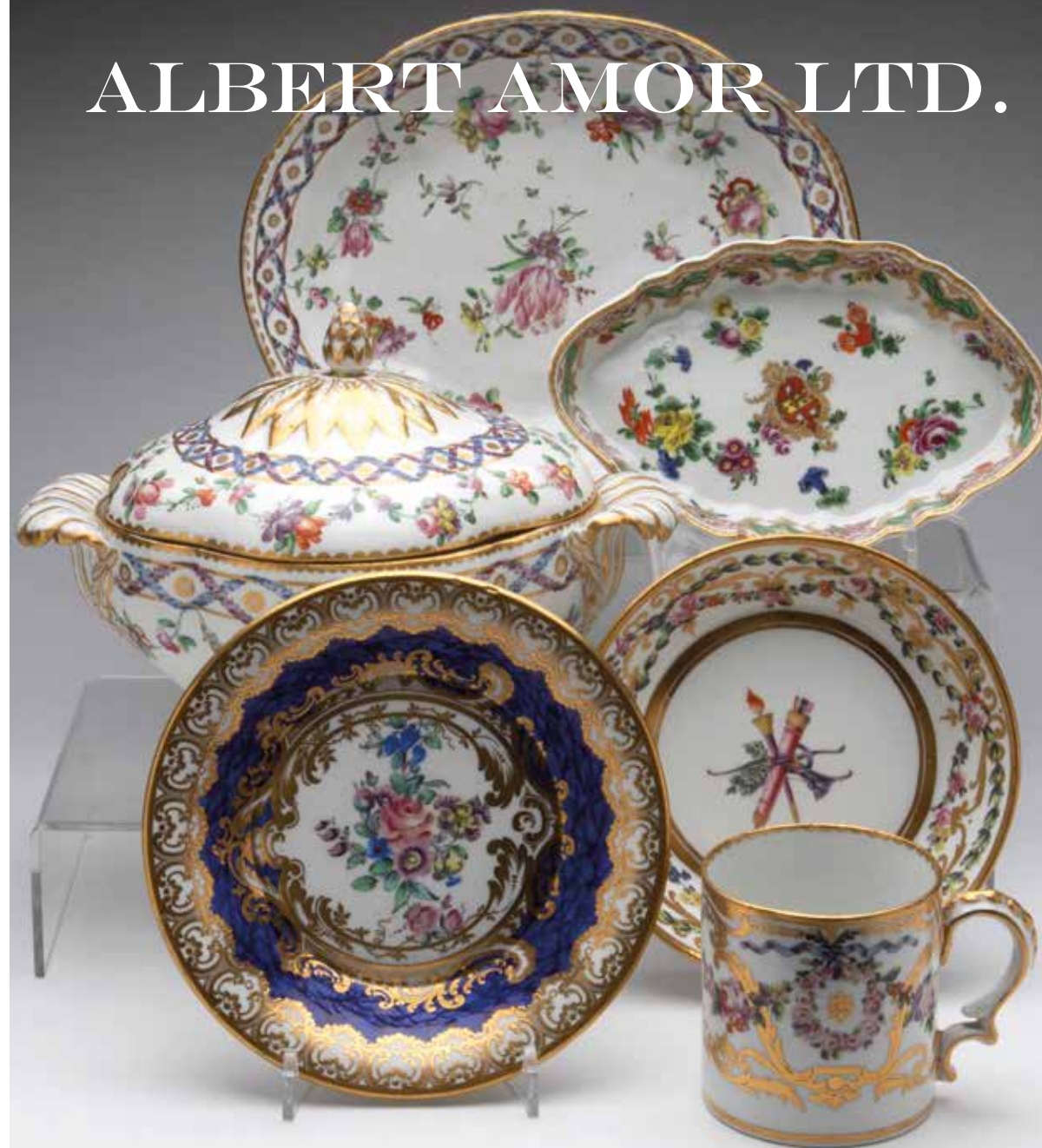
ALBERT AMOR LTD.

THE VANESSA STEVENSON COLLECTION



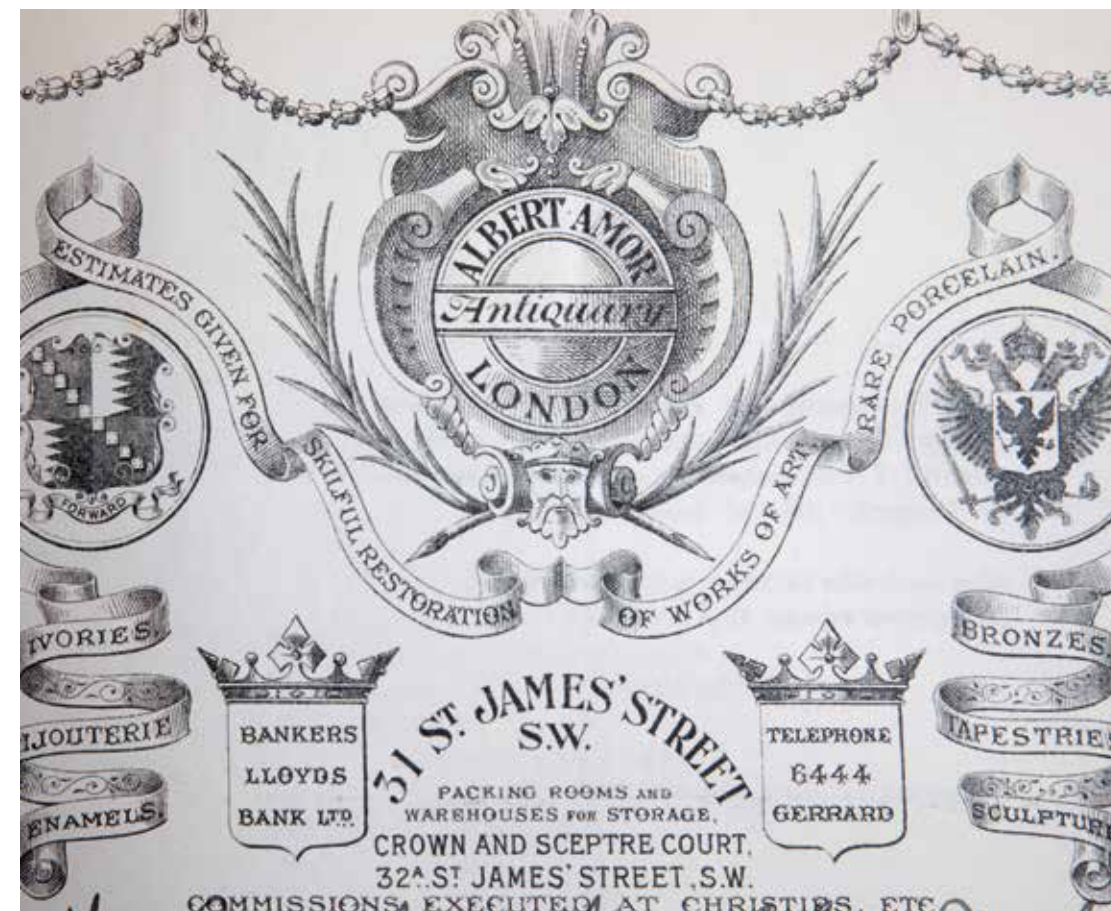
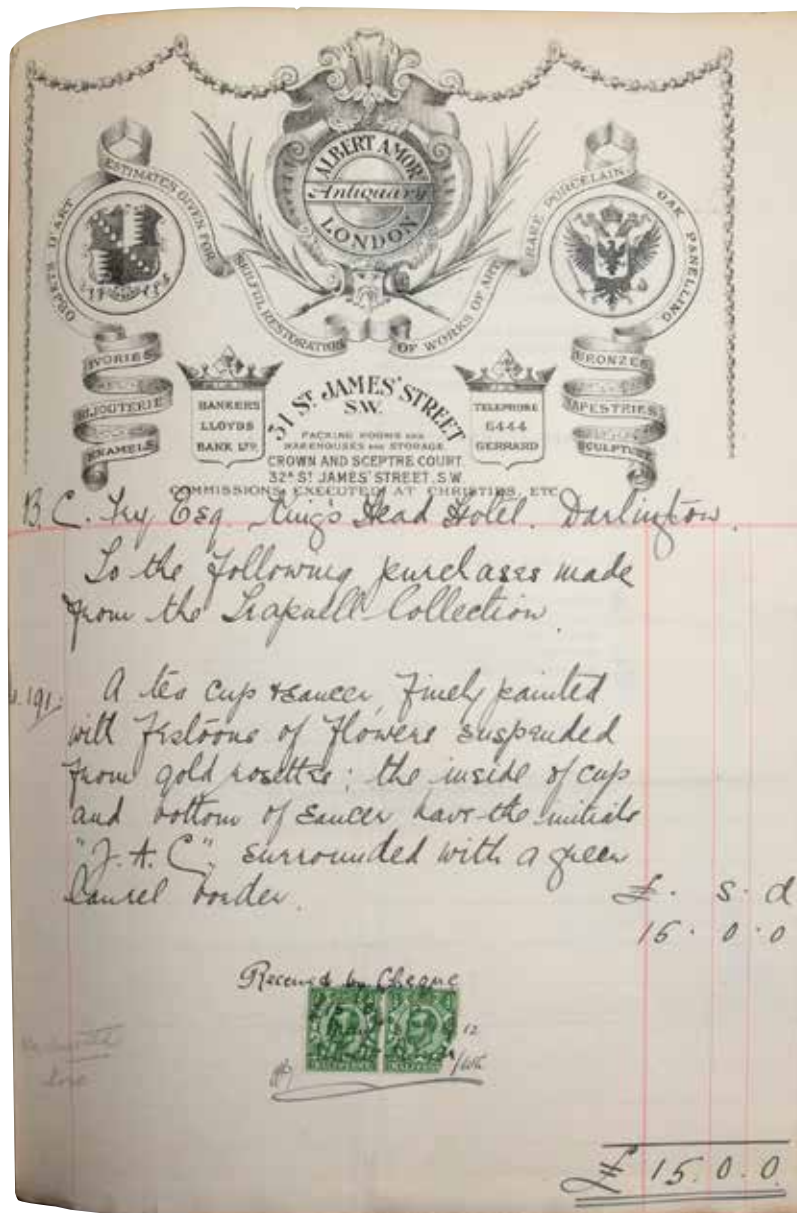
BY APPOINTMENT TO
H.M. THE QUEEN
SUPPLIERS OF 19TH CENTURY PORCELAINS

ALBERT AMOR LTD.



THE VANESSA STEVENSON COLLECTION

37 BURY STREET, ST JAMES'S, LONDON SW1Y 6AU



Exhibition 28th September - 15th October 2021

10.00am - 5.00pm Monday to Friday
Saturday and Sunday by appointment

TELEPHONE: 0207 930 2444

WWW.ALBERTAMOR.CO.UK

FOREWORD

Preparing the catalogue for this exhibition has given me the opportunity to reflect on not only the products of the Plymouth and Bristol porcelain factories, but also the history of collecting 18th century English porcelain over the last 120 years.

The Vanessa Stevenson Collection includes numerous pieces which have provenance to earlier collectors, such as F Severne Mackenna, Peter Stephens, Mrs Kneller, Lady Palmer, Bernard Watney, Mrs Charles Dunlap, Frank Arnold and the Fry family, many of whom appear in the Albert Amor daybooks that survive from circa 1950 onwards. The recurring provenance though is that of Alfred Trapnell, the greatest collector of Bristol and Plymouth, whose collection of 1200 pieces was exhibited for sale by Albert Amor in 1912, and is recorded in the lavishly illustrated catalogue we produced at that time.

That so many pieces formerly in the Trapnell Collection should return to Albert Amor for sale 109 years after their first appearance with us means a great deal to me, particularly as 2021 marks 20 years since I took over the business from my predecessor Mrs George. In those twenty years, much has changed in the antiques world, particularly the reliance on email and our website to keep in touch with collectors at home and around the world, but the motivation of Albert Amor and our collectors remains as that which motivated collectors a century ago - to enjoy, study and acquire the products of the extraordinary enterprises that figures such as Cookworthy and Champion took great risks to establish in the second half of the 18th century.

This I know was the motivation of Vanessa Stevenson, who is first recorded in our daybook making a purchase in 1995. A resident of Bristol, and very involved in the artistic life of the city, Vanessa was passionate about adding to her collection, and would often call me the moment she received the latest Amor catalogue if it featured Bristol or Plymouth pieces. When she and her husband Alan came to London, he would go to look at pictures in nearby galleries, allowing Vanessa time to make discreet purchases from me, before he came to join her – something I am sure many other collectors can understand!

Having recently moved house, the decision was made to part with the porcelain collection, knowing that the fruits of over 30 years of collecting will give great pleasure and opportunities to the next generation of collectors.

By coincidence, shortly after we were instructed by Vanessa to sell her collection, we acquired a number of rare pieces of Bristol and Plymouth for stock. By kind agreement of Vanessa and her family, we include these in this catalogue, marked accordingly. I feel this is particularly appropriate, as I have little doubt Vanessa would have acquired a number of them had she still been collecting!

All pieces are for sale from the publication of this catalogue. Do please contact me if I can tell you more. I hope that as the world begins to return to 'normal', many of you will have the chance to visit Bury Street to see the pieces here.

Mark Law

London. September 2021

mark@albertamor.co.uk

The Trapnell Collection



A figure of a man, whose entire figure is made of porcelain, and is a very fine specimen of the art of the 18th century. It is a very fine specimen of the art of the 18th century. It is a very fine specimen of the art of the 18th century.

A large, ornate vase, which is a very fine specimen of the art of the 18th century. It is a very fine specimen of the art of the 18th century. It is a very fine specimen of the art of the 18th century.

MR. ALBERT AMOR begs to remind his clients and those interested in Fine Old English Porcelain that the Exhibition which he is now holding at his Galleries, 31, St. James's Street, must close on the 22nd March, and as the collection has not been purchased in its entirety, there are a number of interesting specimens which can be secured at very reasonable prices.

Mr. Amor will be happy to furnish full particulars to intending purchasers. An illustrated booklet, by Frederick Litchfield, with a short account of the Bristol Factory and references to the Trapnell Collection, with rare marks on specimens, will be sent post free on application to collectors.

ALBERT AMOR
31 St. James's Street, LONDON, S.W.



1.
A rare pair of Bristol figures of a young girl and boy, emblematic of Liberty and Matrimony, standing, she wearing a green trimmed bonnet, yellow dress and puce trimmed apron, a birdcage in her right hand, and he wearing a black hat, puce coat and patterned breeches, a bird in his left hand, each on mound base, 8" high, circa 1775, she with blue painted X mark and numeral 10



2.

A fine Bristol ogee shaped teapot and flat cover, with leaf moulded ear shaped handle and button knop, painted en grisaille with classical profiles, within gilt oval panels, above flower garlands in coloured enamels, suspended from puce rosettes, within gilt interlinked and leaf scroll bands, 5" high, circa 1773, numeral 1 in gilt beneath

Exhibited; Albert Amor, 18th Century English Porcelain From Renowned Collections Exhibition, 2000, number 56

See F S Mackenna, Plymouth and Bristol Porcelain, page 86, number 47, for a similarly decorated ovoid teapot and cover, also with the rare feature of lugs to hold the cover in place



3. An extremely rare Plymouth model of a parrot, finely naturalistically decorated in green, red and black, and perched on a stump, flanked by coloured flowers and leaves, the stump picked out in yellow and iron red, 5 ½" high, circa 1768-70, no mark

No other example of this Plymouth model appears to be recorded



4.

An extremely rare pair of Plymouth models of pheasants, each modelled with head turned, and tail feathers raised, its plumage decorated in yellow, pale blue, puce, brown and iron red, on tree-stump shaped base, applied with coloured flowers and leaves, 5 $\frac{3}{8}$ " high, circa 1768-70, no marks

Provenance; Sotheby's, London, 14th May 1974, lot 125

See F S Mackenna, Plymouth and Bristol Porcelain, numbers 45 and 46, for a pair of taller models of pheasants, in the white. A coloured pair of this larger model is in the Lady Ludlow Collection, Bowes Museum



5.

A rare Bristol quatrefoil shaped sauce tureen, cover and stand, with two shell and laurel moulded handles, and pinecone knob issuing from gilt stiff leaves, painted in coloured enamels with garlands of flowers and leaves, within blue, puce and gilt flower head panelled interlinked borders, the foot of the tureen moulded with stiff leaves, picked out in gilt, 8" wide overall, circa 1775, blue painted X mark and numeral 6 in gilt

Provenance; Alfred Trapnell Collection, Exhibited Albert Amor Limited, 1912, number 170 (then a pair)

Exhibited; Albert Amor, 18th Century English Porcelain From Renowned Collections Exhibition 2000, number 55 (then a pair)



6.

A Plymouth baluster shaped mug, with notched loop handle, painted in Chinese famille verte style with a version of the Dragon in Compartments pattern, 5 $\frac{3}{4}$ " high, circa 1768-70, incised 2 and red painted tin mark

This distinctive pattern was also popular at Worcester in the 1765-77 period



7.
A very fine Bristol cabinet cup and saucer, the cylindrical cup with elaborate 'C' scroll handle moulded with leaves and husks, superbly painted in coloured enamels with swags of flowers, and roundels of pink roses suspended from blue ribbons, within gilt leaf scrolls, the saucer with a central trophy emblematic of Love, the cup 2 ⁵/₈" high, circa 1775, blue painted X marks and numeral 3 in gilt

Provenance; F Severne Mackenna Collection

Peter Stephens Collection

Illustrated; Antique Collector, January-February 1940

Apollo, April 1944 and June 1945

E C C Loan Exhibition Catalogue, 1948, plate 114

F S Mackenna, Plymouth and Bristol Porcelain, figure 92

Exhibited; Cheltenham Art Gallery and Museum, May 1947

E C C Loan Exhibition, The Victoria and Albert Museum, 1948, number 523





8.

A Bristol tea bowl and saucer, the centre of the saucer, and the base of the tea bowl crisply moulded with spiral gadrooning, painted in coloured enamels with sprays of flowers and leaves, and scattered leaves, the 'C' scroll moulded rims picked out in puce, circa 1775, blue painted X mark and number 12

For another tea bowl and saucer of this form, see the Bristol Porcelain Bicentenary Exhibition, 1970, number 246



9.
A Bristol tea bowl and saucer, painted in coloured enamels with flowers and leaves, within scrolling gilt leaf and green and turquoise laurel bands, with oval laurel garlands, and with a pale blue, puce and gilt interlined band, gilt dentil rims, circa 1775, blue painted crossed swords marks and numeral 2 in gilt

Provenance; Kneller Collection



- 10.**
A rare Bristol figure of a young girl, standing, with feathers in her hair, wearing a flowing dress, picked out in gilt, with a puce sash, and holding a spaniel, wearing a hat, under her left arm, on mound base picked out in green and yellow, 7 ¼" high, circa 1775, no mark

See Albert Amor, *The Alfred Trapnell Collection*, 1912, number 146, for a similar figure. This model was also made at Derby



11.

A Bristol saucer dish, painted in green and gilt with a central lobed roundel, from which radiate gilt bands, the border with green laurel garlands, gilt dentil rim, 7 ¼" diameter, circa 1775, blue crossed swords and dot mark and numeral 3 in gilt

See Albert Amor, *The Alfred Trapnell Collection*, 1912, number 324, for a tea bowl and saucer in a related pattern



12.
A rare Bristol round ecuelle, cover and trembleuse stand, with two laurel moulded ear shaped handles, and pine cone knop, painted in gilt with scattered flowers, within orange and gilt ribbon bands, gilt dentil rims. 6 $\frac{3}{8}$ " diameter overall, circa 1775, grey painted X mark and numeral 3 in gilt



13.

A Lund's Bristol leaf shaped pickle dish, of pointed form, painted in underglaze blue in Chinese style with a 'Long Eliza' type figure strolling through a fenced garden, the underside moulded with veining, 4" long, circa 1749-51, no mark

Provenance; The Bernard Watney Collection, Phillips, Part 1, lot 137

The Lady Palmer Collection, exhibited Albert Amor 2003, number 1



14.
A Bristol coffee cup, with loop handle, painted in purple monochrome with scattered flowers, beneath a flower and leaf scroll band, purple line rim, 2 ½" high, circa 1775, blue painted crossed swords and dot mark

15.
A Bristol tea bowl and saucer, brightly painted in Chinese famille verte palette with three figures before a pine tree, in a fenced garden, one figure holding up a fan, within an iron red interlinked border, circa 1772, blue painted X mark and numeral 7 in blue

See Albert Amor, The Alfred Trapnell Collection, 1912, number 106, for a teapot and cover in a related pattern





16.

A rare Bristol concave sided square dish, painted in coloured enamels with the Arms of Sealy, picked out in gilt, and with the motto 'DUM SPIRO SPERO', within a gilt dentil border, 9 ¼" square, circa 1775, blue painted X mark and numeral 2 in gilt



17.

An extremely rare Bristol sander, of waisted form, painted in coloured enamels with a spray of flowers and leaves, and scattered leaves, the pierced top with a pink looped border, 2 ½" high, circa 1772, blue painted X mark and numeral 8 in pink

A Cookworthy Bristol sander of similar form was in the Wallace Elliot, Frank Arnold and F S Mackenna Collections



18.

A Bristol cylindrical mug, with notched loop handle, painted in gilt with the monogram 'W W', within a garland of berried leaves and palms, flanked in coloured enamels with two bold sprays of flowers and leaves and scattered flowers, within gilt interlinked bands, gilt line rim, 4 ¼" high, circa 1775, blue painted X mark

Provenance; Peter Stephens Collection, number 68, purchased from D M and P Manheim, June 1958

Exhibited; Bristol Porcelain Bicentenary Exhibition, 1970, number 74

The initials 'W W' have traditionally been associated with William Wolcott, one of the original shareholders in Cookworthy's business, but this mug seems to postdate the Cookworthy period



19.
A rare Bristol fluted tea bowl and saucer, from a service believed to have been made for Joseph Harford, the interior of the bowl, and the centre of the saucer finely painted in purple monochrome with cupid with a bow, amidst clouds, and with initials 'JMH' within a diamond shaped shield, the borders painted in coloured enamels with flower sprays and scattered flowers, suspended from gilt scrolls, gilt dentil rims, circa 1774, no mark

Provenance; Christie's London, 27th March 1972, lot 101 (one of a pair)

Christie's London, 23rd February 1976, lot 133

Joseph Harford was a partner of Richard Champion, and invested £3000 in the porcelain factory

For another tea bowl and saucer from this service, but with the cupids holding flaming torches, from the Fulford Collection, see Bonhams London, 6th June 2007, lot 37



20.

A Bristol ogee shaped coffee cup and saucer, the cup with moulded loop handle, painted in green with laurel swags, and with gilt spiral bands, gilt line borders, circa 1775, blue painted X marks and numeral 2 in gilt

See Albert Amor, *The Alfred Trapnell Collection*, 1912, number 324, for a tea bowl and saucer in this uncommon pattern



21.
 The Bristol oval spoon tray, from the Ludlow of Campden Service, centrally painted in coloured enamels with the arms of Daniel Ludlow of Campden, within a gilt scroll cartouche, and with flower sprays, the fluted border painted with flowers suspended from a puce, green and gilt diaper band, 6 ¼" long, circa 1775, no mark
 Provenance; F S Mackenna Collection

Illustrated; F S Mackenna, 18th Century English Porcelain, figure 28

F S Mackenna, Plymouth and Bristol Porcelain, figure 14

The teapot, cover and stand from this service, formerly in the Alfred Trapnell Collection, are now in the Lady Ludlow Collection, Bowes Museum, acquired from Albert Amor April 29th 1927, £84

22.

A rare Bristol tea spoon, from the Ludlow of Campden Service, the shell shaped bowl painted in coloured enamels with a flower spray, the leaf moulded handle painted with a flower, within gilt borders, 4 ¼" long, circa 1775, no mark

Provenance; F S Mackenna Collection

Illustrated; F S Mackenna, Plymouth and Bristol Porcelain, figure 15



23.

A rare Bristol tea spoon, from the Ludlow of Campden Service, the shell shaped bowl painted in coloured enamels with a flower spray, the leaf moulded handle painted with a flower, within gilt borders, 4 ¼" long, circa 1775, no mark



24.
A Bristol tea cup and saucer, from the Ludlow of Campden Service, the cup with entwined loop handle, each piece painted with the arms of Daniel Ludlow of Campden, within a gilt scroll cartouche, and with flower sprays, the borders painted with flowers, suspended from a puce, green and gilt diaper panelled band, gilt dentil rims, circa 1775, no mark



25.

A rare Bristol round sweetmeat dish, of saucer shape, painted in coloured enamels with European flowers, within a gilt leaf scroll cartouche, on a marbled blue ground, the rim with a gilt scroll panelled band, 5 ¾" diameter, circa 1775, blue painted X mark

Provenance; Vernon Roberts Collection, Dunkeld, 1924

A H S Bunford Collection, 1951

F S Mackenna Collection

Peter Stephens Collection

Illustrated; F S Mackenna, 18th Century English Porcelain, figure 29

F S Mackenna, Plymouth and Bristol Porcelain, figure 98

A similar pair of dishes was in the Alfred Trapnell Collection, numbers 529 and 530



26.
A rare set of four Bristol figures of the 'Rustic Seasons', possibly modelled by Pierre Stephan, Spring as a young girl carrying a basket of flowers, Summer as a young boy, holding a sheaf of wheat and a sickle, his coat thrown over a beehive at his feet, Autumn as a young girl with a basket of fruit, and Winter as a young boy skating, a pouch with game at his waist, each decorated in coloured enamels, on mound base, 10 ½" high overall, circa 1775, Summer and Winter with impressed repairer's mark To

Provenance; Reverend V J Higgins Collection

With James A Lewis and Son, New York

Mrs Charles Dunlap Collection, number 590

Sotheby, Parke Burnet, New York, 3rd December 1975, lot 222

Exhibited; Nottingham Museum and Art Gallery



Another set of these figures is in the Lady Charlotte Schreiber Collection, Victoria and Albert Museum. A further set were in the Francis Fry Collection, and sold Sotheby, Wilkinson and Hodge, 2nd May 1889, lots 40 and 41 (illustrated with line drawings in the catalogue)

The repairer's mark To has traditionally been ascribed to Tebo, but may well relate to John Toulouse



27.
A rare Bristol small figure of a putto, standing, with flowers in his hair, a basket of flowers on his left arm, and a flower in his right hand, decorated in coloured enamels, the green glazed mound base with three scroll feet, 5" high, circa 1772-75, no mark



28.

A Bristol small bullet shaped teapot and cover, with crabstock handle and spout, and flower and leaf knop, painted in coloured enamels with sprays of flowers and leaves, and scattered flowers, beneath an iron red, puce and gilt diaper and cartouche border, suspending coloured flowers and leaves, 3 ½" high, circa 1775-78, no mark



29.
A Bristol small barrel shaped mug, with laurel moulded ear shaped handle, painted in coloured enamels with swags of flowers and leaves, suspended from a blue band, 3 1/8" high, circa 1772, no mark



30.

A Bristol fluted coffee cup and saucer, the cup with laurel moulded ear shaped handle, painted in green monochrome with swags of flowers and leaves, suspended from gilt loops, gilt dentil borders, circa 1772-75, blue painted X marks and number 10

31.

A Bristol tea bowl and saucer, painted in coloured enamels with a puce apple amidst flower sprays, and with scattered flowers, gilt dentil rims, circa 1775, no mark





- 32.**
A Bristol small cos lettuce shaped sauceboat, with stalk loop handle, painted in coloured enamels with flowers and leaves, and picked out in puce, puce line rim, 5 ½" long, circa 1772-75, blue painted X mark and numeral 1

- 33.**
A Bristol globular teapot and cover, with reeded loop handle, leaf moulded spout and pointed knop, simply painted in coloured enamels with sprays of flowers and leaves and scattered flowers, within iron red interlinked bands, 5 ¼" high, circa 1772-75, blue painted X mark and numeral 17

This teapot displays particularly well the 'wreathing' found in the body of Bristol porcelains





34.

A very rare Bristol inkwell, of tapering cylindrical form, the central well surrounded by three quill holders, painted in coloured enamels with a spray of flowers and leaves, and scattered flowers, 3 ¼" diameter, circa 1775, no mark

Provenance; The Frank Arnold Collection, acquired Sotheby's, 28th January 1964, lot 393

Peter Stephens Collection, number 142

Exhibited; Bristol Porcelain Bicentenary Exhibition, 1970, number 135



35.
A Bristol helmet shaped milk jug, with laurel moulded ear shaped handle, painted in coloured enamels with sprays of flowers and leaves, beneath flower garlands suspended from green roundels on a gilt interlinked band, the neck moulded with a basketwork band, gilt line rim, 4" high, circa 1775, blue painted X mark



36.

A Bristol baluster shaped sparrow beak milk jug, with loop handle, painted in Chinese famille verte palette with three figures in a wooded garden, beneath an iron red loop and dot border, the handle picked out in puce, 3 ½" high, circa 1775, no mark



37.

A Bristol ogee shaped bowl, painted in green monochrome with swags of flowers and leaves, suspended from gilt loops, gilt dentil borders, 5 ½" diameter, circa 1772-75, blue painted X mark and numeral 3



- 38.**
A Bristol round bowl, the exterior painted in coloured enamels with swags of flowers and leaves, suspended from pink rosettes, from which issue gilt leaf scrolls and laurel, the interior painted with a pink rose, gilt dentil rim, 5 ¾" diameter, circa 1775, numeral 1 in gilt

- 39.**
A rare Bristol custard cup and cover, of baluster shape, with laurel moulded angular loop handle and button knob, decorated in gilt with simple scattered flowers, within gilt dentil borders, 2 ¾" high, circa 1775, blue painted X mark and numeral 5 in gilt

See F S Mackenna, Plymouth and Bristol Porcelain, page 80, number 39, for another custard cup and cover of this form, but richly decorated





40.

A Bristol baluster shaped mug, with notched loop handle, very unusually painted in coloured enamels with wheatear and scattered flowers, brown line rim, 4 1/8" high, circa 1775, blue painted crossed swords mark





41.

A Plymouth triple shell shaped sweetmeat dish, in the white, with central shell shaped finial, the base finely modelled as seashells, coral and seaweed, 7 ½" diameter overall, circa 1770, no mark



42.

A Bristol baluster shaped mug, with notched loop handle, painted in coloured enamels with a spray of flowers and leaves, and scattered flowers, beneath a ribbon tied stiff leaf band, brown line rim, 3 $\frac{3}{4}$ " high, circa 1775, blue painted X mark and initial E in iron red



43.
A rare set of four Plymouth figures of the Continents, in the white, each represented by a standing young woman, America with feathered headdress and tunic, drawing an arrow from a quiver, a dog at her feet, Asia holding a censer, a camel at her side, Africa with a crocodile and a lion at her feet, and Europe holding a book and an artist's palette, a horse, cannon and cuirass at her feet, each on scroll moulded mound base, 13 ½" high overall, circa 1768-70, no marks

Provenance; T D and T O Kellock Collection

Sotheby's London, 18th July 1972, lot 127

Exhibited; Mint Museum, Charlotte, NC, October 2004 – January 2005





44.
A Bristol small oval butter boat, with loop handle, moulded in relief with two clusters of fruits and leaves, and painted in coloured enamels with a spray of flowers and leaves and scattered flowers, beneath a puce border, the foot with an iron red interlinked band, 4 ¼" long, circa 1772-75, blue painted X mark



45.
A pair of Bristol shell shaped dishes, each painted in coloured enamels with a flower spray, within a flower garland border, suspended from a band on interlinked puce and blue ribbons, containing gilt flower head medallions, gilt dentil rim, 7 ½" wide, circa 1778, blue painted X marks and initial C in gilt

Provenance; Peter Stephens Collection, number 57, acquired Sotheby's, 14th May 1957, lot 99



46.

A Bristol fluted lozenge shaped dish, painted in coloured enamels with flowers, within a flower garland border, suspended from a band of interlinked puce and blue ribbons, containing gilt flower head medallions, gilt dentil rim, 10 ¼" wide, circa 1778, blue painted X mark

47.

A Bristol lobed plate, painted in coloured enamels with a spray of flowers and leaves, within a flower garland border, suspended from a band of interlinked puce and blue ribbons, gilt dentil rim, 9" diameter, circa 1778, blue painted X mark

Provenance; Fry Collection

This plate bears an interesting manuscript label inscribed by J P Fry, with its history and his acquisition of it circa 1912





- 48.**
A Bristol ogee shaped tea cup and saucer, the cup with moulded loop handle, painted in coloured enamels with swags of flowers and leaves, suspended from pink rosettes, from which issue gilt leaf scrolls and laurel, gilt dentil rims, circa 1775, the saucer with underglaze blue crossed swords mark, each piece with numeral 1 in gilt

- 49.**
An English porcelain coffee can and saucer, in Bristol style, the cup with faceted loop handle, painted in green and puce with bands of leaves, within gilt line and interlinked roundel bands, gilt dentil rims, circa 1860-80, pseudo Bristol blue X mark and numeral 1 in gilt





50.

A very rare Plymouth baluster shaped sparrow beak milk jug, with loop handle, painted in underglaze blue in Chinese style with bamboo, peony, a fence and rockwork, 3 1/4" high, circa 1768-70, blue painted tin mark

Provenance; The Pinewood Collection

See Bernard Watney, English Blue and White Porcelain, plate 92a, for a cup and saucer in this uncommon pattern





51.
A rare Bristol leaf shaped pickle dish, painted in underglaze blue with a spray of flowers and leaves, and scattered flowers, the serrated rim picked out in blue, the underside crisply moulded with veining, 3 ¾" wide, circa 1775, blue painted X mark



52.

A Bristol coffee cup and saucer, the cup with laurel moulded ear shaped handle, painted in coloured enamels with garlands of flowers and leaves, suspended from green rosettes, on a gilt interlinked band, the basket moulded border with gilt line rim, circa 1775, blue painted X mark and numeral 5



53.

A rare Plymouth large hexagonal baluster shaped vase and domed cover, with pinecone and leaf knop, painted in coloured enamels with butterflies and other winged insects, and a ladybird, with applied garlands of coloured flowers and leaves, suspended from puce and blue ribbon ties, within bright green and gilt flower and 'C' scroll borders, the base with stiff leaves, picked out in green, puce and gilt, 16" high, circa 1769-70, painted tin mark in iron red



54.

A Bristol round sucrier and domed cover, of slightly ogee form, with very finely modelled flower knob, painted in coloured enamels with garlands of flowers and leaves, suspended from pink rosettes, from which issue gilt leaves and laurel, gilt dentil borders, 4" high, circa 1775, no mark

Provenance; A S R Hughes Collection

Peter Stephens Collection, acquired Sotheby's, June 1954, part lot 131

Illustrated; F S Mackenna, *Champion's Bristol Porcelain*, figure 27

Exhibited; Bristol Porcelain Bicentenary Exhibition, 1970, number 219b



55.

A Bristol lobed plate, unusually painted in coloured enamels with a roundel of flowers and leaves, within a flower garland border, suspended from gilt loops, gilt dentil rim, 8" diameter, circa 1775, blue painted X mark

Provenance; Frank Arnold Collection, number E472





56.

A rare Bristol cabaret set, each piece painted in coloured enamels with scattered flowers, within a pink scale border, with green 'C' scrolls and flower heads, suspending garlands of flowers and leaves, comprising; an ovoid teapot and cover, with crabstock handle and spout, and flower knob, a baluster shaped milk jug, an ovoid sucrier and cover, with flower knob, a tea cup and saucer, the cup with double 'C' scroll handle, and an oval tray, the tray 11 ¼" wide, circa 1775, the saucer and sucrier with underglaze blue crossed swords and dot marks

Provenance; Peter Stephens Collection, purchased from Albert Amor 13th April 1971



57.

A Bristol slightly ogee shaped tea cup, coffee cup and saucer, the cups each with moulded loop handle, painted with tiny pink roses and leaves, within puce diaper, gilt line and green laurel bands, gilt dentil rims, circa 1775, blue painted X marks

The barrel shaped teapot and cover from this service was formerly in the Knowles Boney Collection, sold Sotheby's, 5th June 1967, then in the Peter Stephens Collection. It was exhibited at the Bristol Porcelain Bicentenary Exhibition, 1970, number 252a, together with the sucrier, milk jug and a coffee cup and saucer from the service



58.

A Bristol ovoid milk jug, with entwined handle, painted in coloured enamels with swags of flowers and leaves, suspended from a pink ground band, with turquoise 'C' scrolls, above a band of turquoise laurel leaves, tied with pink bows, and spiralling gilt stiff leaves, 4 ⁷/₈" high, circa 1775, numeral 6 in gilt

59.

A rare Bristol slender sorbet cup, with flared rim and laurel moulded ear shaped handle, painted in coloured enamels with two sprays of flowers and leaves, and scattered flowers, within gilt line borders, on round foot, 3" high, circa 1775, blue painted X mark and numeral 9





60.
A Bristol coffee cup and saucer, the cup with leaf moulded ear shaped handle, painted in coloured enamels with swags of flowers and leaves, suspended from gilt scroll moulded rims, the base of the cup and the well of the saucer with a moulded spirally fluted band, circa 1775, the cup with underglaze blue crossed swords mark, the saucer with numeral 1 in gilt

For an identical cup and saucer, see Bonhams, The Fulford Collection, 6th June 2007, lot 371



61.

A Bristol tea cup and saucer, the cup with angular loop handle, painted in coloured enamels with swags of flowers and leaves, suspended from gilt scroll moulded rims, the base of the cup and the well of the saucer with a moulded spirally fluted band, circa 1775, the cup with underglaze blue crossed swords mark, and each piece with numeral 1 in gilt



- 62.**
An unusual Bristol coffee cup, with loop handle, painted in underglaze blue with three trailing sprays of flowers, the interior of the rim with a diaper band, 2 ¼" high, circa 1772-75, blue painted X mark



- 63.**
A Plymouth tea bowl and saucer, unusually painted in coloured enamels with a central garland of flowers, and scattered flowers, within flower and puce 'C' scroll borders, 4 ¾" diameter, circa 1770, no mark



64.

A Plymouth oval cream boat, with high scroll handle, painted in Chinese famille verte palette with flowers and leaves, within 'C' scroll moulded cartouches, beneath a scroll moulded rim, on shell and scroll moulded spreading foot, 3 ¾" high, circa 1768-70, no mark

65.

A rare Bristol biscuit porcelain birds nest, containing three eggs, 3" diameter, circa 1773-6

Provenance; Acquired from David and Sally March, January 2000

See F S Mackenna, Plymouth and Bristol Porcelain, page 138, number 94, for another example, from the H W Hughes Collection





66.
A Plymouth ovoid sparrow beak milk jug, with loop handle, brightly painted in coloured enamels with a spray of flowers and leaves, and scattered flowers, beneath an iron red looped border, 3 ½" high, circa 1768-70, no mark



67.

A pair of Bristol lobed plates, each brightly painted in coloured enamels with a central spray of flowers and leaves, the border with flower sprays and scattered flowers, gilt dentil rim, 9" diameter, circa 1775, blue painted X and numeral 1 and 9 marks



68.
A Bristol small coffee cup and saucer, the cup with loop handle, painted in shades of green and iron red with laurel swags, suspended from gilt roundels and bands, within green harebell, and gilt line and dentil borders, circa 1775, blue painted X marks, and the cup with numeral 3 in blue

See Albert Amor, *The Alfred Trapnell Collection*, 1912, number 40, for a pair of tea cups and saucers in this pattern



69.

A rare Bristol ogee shaped coffee cup and saucer, from the Colston Service, the cup with moulded loop handle, each piece painted in blue and gilt with forget-me-nots forming the initial 'C' beneath a flower garland, with dentil rims, circa 1775, the saucer with underglaze blue crossed swords mark

Provenance; Dr William P Harbeson Collection, number E B 3

Sotheby Parke Bernet, New York, 4th April 1972, lot 95

See Albert Amor, *The Alfred Trapnell Collection*, 1912, number 506, for a pair of cups from this service, one illustrated in Plate XXIII

The Colston family were prominent in commercial and civic life in Bristol at the end of the 18th century, particularly Edward Colston, the now controversial trader



70.
A rare Plymouth oval sauceboat, with 'C' scroll handle, painted in pale underglaze blue with buildings in mountainous Chinese river landscapes, above flower moulded garlands, and painted with flowers beneath the lip, below a reeded scroll moulded rim, the foot moulded with a stiff leaf band, the interior of the lip painted with flowers and diaper, 6 ¼" long, circa 1768, no mark



71.

A rare Plymouth ogee shaped tea cup and saucer, the cup with moulded loop handle, painted in coloured enamels with sprays of flowers and leaves, within gilt bands, entwined with flowers, leaves, and puce 'C' scrolls, gilt dentil borders, circa 1768-70, tin mark in iron red



72.

A Bristol Delft flared round punch bowl, painted in blue to the interior with a blackamoor holding a punch bowl, before swags and tassels, the exterior painted with figures and buildings, in a continuous wooded landscape, 10 ¼" diameter, circa 1750

Provenance; Acquired from Jonathan Horne 2002 'Bristol punch bowl with blackamoor'



73.

A Bristol Delft flared round bowl, unusually painted in blue with a cat and a Chinese figure in a continuous landscape, beneath a diaper band, the interior painted with a ship in full sail, within blue bands, 7 ¾" diameter, circa 1750

A cat is an extremely rare subject on English delftware



74.
A Bristol Delft plate, painted in blue with a Chinese boy chasing a butterfly, in a river landscape with rockwork and a fence, 9 ¼" diameter, circa 1750

Provenance; Acquired from Jonathan Horne, March 2003



75.

A Bristol Delft plate, painted in Chinese style in blue, manganese, yellow and green with a bird, flowers and pierced rockwork, within two blue bands, the border with three sprays of flowers and leaves, 9" diameter, circa 1760



76.
A Bristol pearlware round plaque, painted in coloured enamels, possibly by William Fifeild, with three birds, perched on a tree, a fence and in flight, and a butterfly, in a river landscape, brown glazed border, 7 ¼" diameter, inscribed verso with initials 'WF to JH. 1848', circa 1848



77.

A Bristol pearlware round plaque, painted in coloured enamels, possibly by William Fifield, with a view of 'Rose Cottage Henbury', brown glazed border, 7 ¼" diameter, titled verso in brown enamel and dated 1820

See Albert Amor, *The Alfred Trapnell Collection*, 1912, number 805, for another plaque painted with this subject, there attributed to Fifield



78.
A Bristol pearlware rectangular 'thread box', with divided interior, above a recess for a drawer, painted in coloured enamels with flowers in a basket, a river landscape, birds, and a ribbon tied spray of flowers, within purple lustre and blue line borders, on four scroll feet, 6 ½" wide, circa 1820, no mark



79.

A Bristol pearlware rectangular 'thread box', with sliding cover, and divided interior, boldly painted in coloured enamels with sprays of flowers and leaves, within brown line borders, on four paw feet, 7 ¾" wide overall, incised beneath 'W L 1821', circa 1821



- 80.**
 A Thomas Grainger and Co oval two handled dish, finely painted in coloured enamels with a view of 'Henbury Church, Gloucestershire', within a gilt oval panel, on a puce ground decorated in gilt with vines, the pierced and scroll moulded border picked out in cream and gilt, 14" wide, circa 1835-39, script mark in red 'Thomas Grainger, Royal China Works, Worcester', and titled verso

Henbury, formerly a village in Gloucestershire, is now a suburb of Bristol



81.

A Spode oval straight sided spill vase, painted in coloured enamels with a named 'View of Bristol Cathedral & College Green', within a lobed gilt panel, the blue ground finely decorated in gilt with 'C' scrolls and diaper, on spreading foot, 4 $\frac{1}{8}$ " high, circa 1820, titled in iron red beneath

See Leonard Whiter, Spode, pages 100 and 101, for an extract from the Spode 1820 Shape Book, recording this form 'Oval Pedestal Matchpot'



82.
A Bristol pearlware spirit barrel, painted in coloured enamels with two sprays of flowers and leaves, within puce, blue and brown reeded bands, and inscribed in brown 'Mary Ann and George Davis 1850', 5 ¾" high, circa 1850



83.

A Bristol pearlware cylindrical loving cup, with two angular loop handles, boldly painted in coloured enamels with a spray of flowers and leaves, and a flower garland, enclosing the monogram 'F S A ' in brown enamel, brown line borders, 5" high, circa 1820-30, no mark



- 84.**
A child's pearlware octagonal plate, printed and painted with 'Great Western Steam Ship, a buoy in the foreground titled 'Port of Bristol', within a flower head moulded border and purple lustre line rim, 5 ¾" wide, circa 1845-50, printed title and 'length 236 feet, Breadth 52 ½ feet'



- 85.**
A child's Pountney and Allies small pearlware plate, printed in black with a young girl playing Badminton in a garden, within two black bands, 4 ¾" diameter, circa 1830, impressed mark



86.

A Kent and Parr group of a young boy and girl, standing together, decorated in coloured enamels, the oval mound base titled in black 'George Mullers Orphans Bristol', 5 ½" high, circa 1880-90, no mark

George Ferdinand Muller was an ex-patriot Prussian evangelist who settled in England and worked as a Minister, establishing day schools and orphanages funded by charitable donations. It is thought these groups were sold to raise funds for these causes

87.

A pair of Kent and Parr figures of a young boy and girl, he in school uniform, and she carrying a basket, each decorated in coloured enamels, on round mound base titled in black 'Colston Boy, Bristol' and 'Red Maid, Bristol', 5 ½" high, circa 1880-90, no marks





88.
English School

Portraits of Richard Champion and his
wife Judith Lloyd

Watercolour, oval

Each 4 ¼" x 3"

In later frames, profusely inscribed
verso

Provenance; Fry Collection, Bristol



GUARANTEED
GENUINE.

ALBERT AMOR
31
ST. JAMES ST.
S. W.

Champion's
Hard Porcelain.
BRISTOL.

A. TRAPNELL.

Frank
Arnold
Collection.

E472

Bristol

1770-1781

July

ALBERT AMOR
Antiquary
LONDON

FROM
JAS. A. LEWIS & SON, Inc.
57 East 57th Street
New York, N. Y.

Guaranteed Genuine

MUSEUM AND ART
GALLERY,
NOTTINGHAM CASTLE.

—:O:—

Rev. J. J. Higgins.

No. 570.

CHAS. E. DUNLAP
COLLECTION

Fry Collection, 187
Bristol No.

F. S. Mackenna
Collection.
BRISTOL.

No. 97

CROWN AND SCEPTRE COURT,
32A ST JAMES' STREET, S.W.

