



ALBERT AMOR LTD.

**THE RICHARD BULL
COLLECTION
OF FINE DERBY PORCELAIN**



37 BURY STREET, ST JAMES'S, LONDON SW1Y 6AU

Thursday 2nd November - Friday 17th November 2017

10.00am - 5.30pm

Saturday and Sunday closed

TELEPHONE: 0207 930 2444

WWW.ALBERTAMOR.CO.UK



FROM THE COLLECTOR

Bulls and China Shops aren't generally considered felicitous pairings but I hope you will agree that the collaboration between this Bull and Albert Amor has produced something rather more agreeable.

Being Derbyshire born and bred in parts associated with the manufacture of ceramics – Langley Mill then Waingroves near Denby – provided a local footing to graduate on to the appreciation of the finer charms of the Derby porcelain factory.

The collection presented here is the fruit of nearly twenty years' pleasant labour which has involved Albert Amor both as provider and unwittingly at least on one occasion as competitor! I am pleased to cement this relationship in jointly presenting for your consideration my collection of fine Derby porcelain.

Richard Bull
October 2017

FOREWORD

It is 40 years since Albert Amor produced a catalogue devoted to Derby porcelain, so it is appropriate that the Richard Bull Collection includes four pieces from the celebrated William 'Quaker' Pegg dessert service exhibited here in 1977.

This collection I think shows well the superb quality of both the Derby porcelain bodies in the period 1775-1795, and also the wonderfully talented artists who worked there at that time. At a period when the Sevres factory was producing exceptional pieces in Paris, no other English factory came as close to emulating their wares than Derby, with superb coloured grounds, exceptionally detailed painting, and fine gilding and jewellery.

I hope that this catalogue will interest not only existing collectors of Derby, but also collectors of other factories, who have perhaps not appreciated the quality and sophistication of the finest Derby pieces.

Please do contact me if I can provide further details on any pieces. All exhibits are for sale from the publication of this catalogue.

Mark Law

London. October 2017

mark@albertamor.co.uk

1.

A Derby botanical plate, finely painted in coloured enamels with 'Solanum Tuberosum, or Pottatoe Blossom'(sic), the fluted cream ground border with radiating gilt bands, gilt line rim, 9" diameter, circa 1785, crowned crossed batons mark in blue and pattern number 260



2.

A fine Derby 'D' shaped bough pot and flat pierced cover, with two gilt ram's head handles, well painted in coloured enamels with a named view of 'Dalkeith Palace, a seat of the Duke of Buccleugh, Scotland', within a gilt canted rectangular panel, on a pink ground, 9 5/8" wide overall, circa 1790, crowned crossed batons mark in blue and titled in blue beneath

Provenance; The Collection of Mary Sayles Booker Braga



3.

The Chedworth Jug. An important Derby ovoid jug, with straight neck and 'C' scroll handle, finely painted in black and sepia with a battle scene with numerous mounted figures, figures on foot, and a wagon, within an oval gilt panel, and with gilt berried leaf bands, 8" high, circa 1790, crowned crossed batons mark in puce and gilder's number 8 for William Longdon Provenance;

Mary Field Collection

Rowland Williams Collection

Illustrated; John Twitchett, *Derby Porcelain*, 1980, colour plate 23, and *Derby Porcelain, An Illustrated Guide*, 2002, colour plate 20

John Twitchett makes reference to Joseph Lygo's letters of 1790, where he refers to a 'battle print with figures on horseback', assumed to be the source print for this jug. This jug was purchased at a house sale in Chedworth, Gloucestershire, and no comparable decoration has been recorded



4.

A Derby ovoid teapot and cover, with loop handle and pointed knop, painted in gilt with pendant flower head and leaf bands, within salmon and gilt line borders, 6 ³/₈" high, circa 1785, crowned crossed batons mark in puce and pattern number 82

5.

A Derby 'Bacchus mask' mug, with loop handle, finely modelled, and picked out in coloured enamels, within gilt line and dentil borders, 3 ⁵/₈" high, circa 1785, crowned crossed batons mark in puce





6.
An unusual Derby tea bowl, particularly finely painted in coloured enamels with flowers and leaves, beneath a black and green border of diaper panels and 'C' scrolls, 3 ¼" diameter, circa 1780-85, blue crowned D mark
See Gilbert Bradley, *Derby Porcelain 1750-1798*, number 58, for a teapot and cover from a cabaret set in this pattern
7.
A Derby coffee cup, with notched loop handle, finely painted in Chinese famille rose style with figures amongst tables and stands, within oval cartouches, the gilt leaf scroll ground panelled with iron red and puce flowers and trees, 2 ½" high, circa 1768, no mark

8.
A fine Derby Bute Shape tea cup and saucer, well painted in coloured enamels with 'Cromford Cotton Mill, Derbyshire' and 'Near Dalton, Lancashire', within blue, black and gilt 'pearl' bordered panels, the bright yellow ground with pale blue and gilt 'pearl' rims, circa 1790, crowned crossed batons marks and titled in blue

Cromford Cotton Mills is the home of Sir Richard Arkwright's first mill complex, birth place of the modern factory system and now a Unesco World Heritage Site

See Anthony Hoyte, *The Charles Norman Collection of 18th Century Derby Porcelain*, page 64, for a very similar cup and saucer, with unidentified views



9.

A Derby large Porter mug, with wishbone shaped handle, painted in coloured enamels, probably by Robert Brewer, with a named view of Warwick Castle, flanked by gilt urns, cornucopia and leaf scrolls, the rim with monogram 'JF' in gilt, within a leaf scroll band, 5 ½" high, circa 1815, crowned crossed batons mark in red and titled in red beneath



10.

A Derby Porter mug, with wishbone shaped handle, finely painted in coloured enamels with a figure in a lane in a wooded landscape, with a thatched cottage and a city in the distance, within a gilt rectangular panel, the bright yellow ground with gilt line borders, 4 ¾" high, circa 1795, blue crowned crossed batons mark and titled in blue 'Near Edinburgh, Scotland'

11.

A Derby Porter mug, with wishbone shaped handle, painted in coloured enamels by Robert Brewer, with a river landscape, with buildings and an obelisk in the distance, within a gilt rectangular panel, flanked by gilt vases and leaf scrolls, the turquoise ground with gilt line borders, 4 ½" high, circa 1815, crowned crossed batons mark in red

Provenance; English Private Collection
Exhibited; The International Ceramics Fair and Seminar, 1992, number 2





12.

An unusual Derby Porter mug, with wishbone shaped handle, finely painted in coloured enamels with a cluster of flowers and fruits, flanked by bold gilt leaf scrolls, within salmon ground borders, 4 $\frac{3}{8}$ " high, circa 1800-10, crowned crossed batons in puce

13.

A Derby small Porter mug, with wishbone shaped handle, painted in coloured enamels by William Cotton with a figure in a wooded landscape, a castle on an outcrop beyond, within a gilt rectangular panel flanked by gilt leaf scrolls, 2 $\frac{7}{8}$ " high, circa 1815, crowned crossed batons mark in red and titled 'In Westmoreland'

Provenance; English Private Collection

Exhibited; International Ceramics Fair and Seminar, 1992, number 24



14.

A Derby plate, painted in coloured enamels, probably by William Billingsley, with a spray of flowers and leaves, the spirally fluted border with blue and gilt bands, 8 $\frac{1}{2}$ " diameter, circa 1790, crowned crossed batons mark in puce and pattern number 100

15.

A Derby plate, painted in coloured enamels by Edward Withers, with a spray of flowers and leaves, the fluted pale lilac ground border with gilt line and dentil bands, 7 $\frac{1}{2}$ " diameter, circa 1785, crowned crossed batons mark in puce and pattern number 219



16.

A Derby plate, painted by John Wardle with three full blown pink roses and leaves, within a gilt laurel band, the fluted rim with pale green and gilt bands, 9" diameter, circa 1795-1800, crowned crossed batons mark in red and pattern number 232

See John Twitchett, *Derby Porcelain*, colour plate 60, for a sauce tureen, cover and stand by Wardle in this pattern

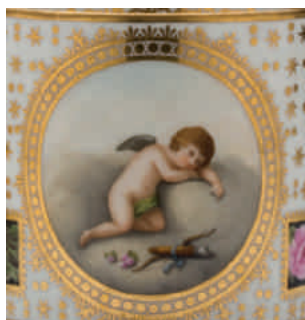
17.

A Derby plate, painted in coloured enamels with 'Embothrium sericeum', within a gilt laurel band, the chocolate brown border with gilt bands, 10" diameter, circa 1795, crowned crossed batons mark in blue and pattern number 315

18.

A very fine Derby coffee can and saucer, well painted in coloured enamels with cupid asleep on a cloud, his bow, quiver and roses at his side, within a gilt oval panel, and with barbed and rectangular panels of pink roses and leaves, on black grounds, probably painted by William Billingsley, on a gilt star and dot ground, the can 2 ½" high, circa 1795, crowned crossed batons marks in puce and gilder's numeral 3 for William Cooper

See W D John, plate 35A
See Anthony Hoyte, *The Charles Norman Collection of 18th Century Derby Porcelain*, page 39, for a coffee can and saucer painted with a seated putto, the decoration there attributed to George Complin



19.

A Derby coffee can, very finely painted in coloured enamels, probably by James Banford, with 'Cupid Disarmed by Euphrosyne', after Angelica Kauffmann, within a gilt geometric rectangular panel, on a lavender ground, the interior with a gilt leaf scroll band, 2 ½" high, circa 1795, crowned crossed batons mark in blue, pattern number 207 and titled in blue

See Anthony Hoyte, *The Charles Norman Collection of 18th Century Derby Porcelain*, page 13, for a bough pot and cover painted by Banford with the same subject.



20.

A very fine Derby coffee can and saucer, brilliantly painted in coloured enamels by George Complin with two Chaffinches amidst a still life of fruit on a shaded ground, within a ribbon tied gilt stiff leaf square panel, the fawn ground with gilt stars and roundels of full blown pink roses and leaves, the can 2 ½" high, circa 1790, crowned crossed batons marks in puce and impressed G beneath the can and H beneath the saucer



See John Twitchett, *Derby Porcelain*, colour plate 30, for another can and saucer painted by Complin, and also impressed G and H

21.

A Derby plate, painted, possibly by William Billingsley, with a full blown pink rose, flowers and leaves, within a gilt dot roundel, the fluted salmon ground border with a gilt pendant flower head band, 8 ¾" diameter, circa 1795, crowned crossed batons mark in puce and pattern number 65

This pattern is often referred to as The Prince of Wales Service

See John Murdoch and John Twitchett, *Painters and the Derby China Works*, page 51, where they record a note from the Lygo Papers that King George III and Queen Charlotte were shown a service in this pattern in 1797, and purchased it for the Royal Household



22.

A pair of Derby plates, each decorated in gilt with a flower spray, within a blue and gilt leaf roundel, the spirally fluted border decorated in white enamel and gilt with flower heads, on a blue ground band, gilt dentil rim, 9 ⅛" diameter, circa 1790, crowned crossed batons marks in puce, pattern number 69 and gilder's numeral 3

23.

A Derby plate, finely painted in coloured enamels with a variegated tulip, within a gilt line rim, 8 ¾" diameter, circa 1815, crowned crossed batons mark in red and titled 'Tulip'



24.

A Derby plate, finely painted in coloured enamels with a Peony, the spirally fluted orange ground border decorated in gilt with trailing flowers and leaves, 9 ¼" diameter, circa 1800, crowned crossed batons mark in blue and titled 'Poeany (sic)' verso
See Gilbert Bradley, *Derby Porcelain, 1750-1798*, number 106, for another plate from this service, in Derby Museum and Art Gallery

25.

A pair of Derby plates, finely painted in coloured enamels, probably by George Robertson, with bridges and buildings in extensive river landscapes, within square gilt leaf bordered panels, the bright green ground with gilt line and leaf bands, 9 ¼" diameter, circa 1795, blue crowned crossed batons marks, pattern number 254 and titled in blue 'View near Landaff, South Wales'(sic) and 'Keswick Lake, Cumberland'



26.

A rare Derby plate, painted en grisaille with three putti and a goat, on a red ground, within a gilt geometric band, the fluted border with trailing gilt flowers and leaves, 9 ⅛" diameter, circa 1795, crowned crossed batons mark in gilt



27.

A Derby coffee cup, painted in coloured enamels, probably by Zachariah Boreman, with three figures and a dog in a rocky landscape, within a gilt oval panel, gilt line borders, 2 ½" high, circa 1790, crowned crossed batons mark in blue and titled 'Near Cromford, Derbyshire'

Compare this view of Cromford Mill with that on number 8 in this catalogue



28.

A pair of Derby soup plates, from the Duke of Northumberland Service, each finely painted in coloured enamels by William Billingsley, with scattered full blown pink roses and leaves, the turquoise ground oeil-de-perdrix border with three sprays of pink roses and leaves, each within an oval gilt panel, 9 ¾" diameter, circa 1795, crowned crossed batons marks in puce

The Northumberland Service was originally ordered from Derby in the 1780's, and was decorated by Edward Withers. In 1790, the Duke then placed a further order for twenty matching soup plates, and these were painted by Billingsley



29.

A Derby soup plate, the border painted, probably by William Billingsley, with a band of full blown pink roses, buds and leaves, on a pale blue dotted ground, within gilt line borders, 9 ¾" diameter, circa 1795, crowned crossed batons mark in puce



30.

A pair of Derby 'Monnlight' plates, each painted en grisaille, probably by John Brewer, with numerous vessels and figures, within a gilt roundel, and with three puce, green and gilt leaf sprays, the indented border with further leaf sprays, within moulded gilt lobed cartouches, on a green, puce and gilt flower head panelled band, 9 ¼" diameter, circa 1795, crowned crossed batons marks in puce and pattern number 204

Number 31 to 34 decorated with the 'Blenheim Pattern'



31.

A large Derby oval meat dish, painted in coloured enamels by George Robertson with figures in a lane, in a wooded mountainous landscape, within a gilt oval panel, the barbed rim with a band of scrolling gilt leaves, and blue, pink and yellow flower heads, 20" wide, circa 1797-1800, crowned crossed batons mark in blue, pattern number 178 and titled 'View in Wales'

32.

A Derby oval meat dish, painted in coloured enamels by George Robertson with a large tree and buildings on the banks of the Thames, within a gilt oval panel, the barbed rim with a band of scrolling gilt leaves, and blue, pink and yellow flower heads, 10 ¼" wide, circa 1797-1800, crowned crossed batons mark in blue, pattern number 178 and titled 'View of part of Twickenham' Provenance; Roland Hembrow Collection
See John Twitchett, Derby Porcelain, colour plate 57, for a saucetureen and cover in this pattern, also painted by George Robertson



33.

A Derby plate, painted in coloured enamels by George Robertson with a country house in a wooded landscape, within a gilt roundel, the barbed rim with a band of scrolling gilt leaves, and blue, pink and yellow flower heads, 9 ½" diameter, circa 1797-1800, crowned crossed batons mark in blue, pattern number 178 and titled 'Brockley Park'



34.

A Derby plate, painted in coloured enamels by George Robertson with a figure in a boat in a wooded river landscape, within a gilt roundel, the barbed rim with a band of scrolling gilt leaves, and blue, pink and yellow flower heads, 9 ½" diameter, circa 1797-1800, crowned crossed batons mark in blue, pattern number 178 and titled 'Beau Park, County of Meath'

Provenance; Rowland Williams Collection, number 219A



35.

A pair of Derby diamond shaped dishes, finely painted in coloured enamels with 'Rudbeckia Purpurea, Purple Rudbeckia' and 'Althae Frutrex', each within a gilt laurel band, the bright yellow ground border with gilt bands, 10 ¾" wide, circa 1795, crowned crossed batons marks in blue, pattern number 216 and each titled in blue



36.

A pair of Derby lobed round dishes, each painted in coloured enamels by William Billingsley with full blown pink roses, buds and leaves, within a gilt laurel band, the bright green ground border with gilt bands, 8 $\frac{3}{4}$ " diameter, circa 1790, crowned crossed batons marks in puce and pattern number 232



37.

A pair of Derby plates, of Duke of Newcastle type, each painted in coloured enamels by William Billingsley with three sprays of flowers and leaves, the barbed border with gilt line rim, 9 $\frac{1}{4}$ " diameter, circa 1790, crowned crossed batons marks in puce, pattern number 80 and gilder's number 2 for Joseph Stables
Provenance; John Harrison Hood Collection

38.

A Derby plate, superbly painted in coloured enamels by William 'Quaker' Pegg with 'Hibiscus Speciosus, Broom', within a gilt line rim, 8 $\frac{3}{4}$ " diameter, circa 1813-15, crowned crossed batons mark in red, titled in red verso and number 23

Provenance; From the celebrated Derby Quaker Pegg decorated service exhibited for sale by Albert Amor Limited in 1977, each plate from the service numbered verso from 1-24



39.

A Derby plate, superbly painted in coloured enamels by William 'Quaker' Pegg with 'Major Daffodil, & Aloe Humilis', within a gilt line rim, 8 $\frac{3}{4}$ " diameter, circa 1813-15, crowned crossed batons mark in red, titled in red verso and number 14

Provenance; From the celebrated Derby Quaker Pegg decorated service exhibited for sale by Albert Amor Limited in 1977, each plate from the service numbered verso from 1-24



40.

A Derby plate, superbly painted in coloured enamels by William 'Quaker' Pegg with 'Indian Chrysanthemum, & Peacock Iris', within a gilt line rim, 8 $\frac{3}{4}$ " diameter, circa 1813-15, crowned crossed batons mark in red, titled in red verso and number 17 Provenance; From the celebrated Derby Quaker Pegg decorated service exhibited for sale by Albert Amor Limited in 1977, each plate from the service numbered verso from 1-24



41.

A Derby fluted lozenge shaped dish, superbly painted in coloured enamels by William 'Quaker' Pegg with 'Gum Cistus Anemone & Yellow Jessamine', within a gilt line rim, 11 $\frac{1}{4}$ " wide, circa 1813-15, crowned crossed batons mark in red and titled in red verso Provenance; From the celebrated Derby Quaker Pegg decorated service exhibited for sale by Albert Amor Limited in 1977, the service including four dishes of this shape



42.
A rare Derby biscuit porcelain cased mantel clock, modelled as Diana the Huntress, holding a bow, a hound at her side, on a rocky mound containing a gilt metal cased round white enamel dial, with blue numerals, on breakfront base applied with gilt metal flower head mounts and a pierced trellis band, on turned and beaded feet, the French twin train striking movement with silk suspension, and outside countwheel with pendulum, 12 $\frac{3}{4}$ " high, circa 1785, incised crowned crossed batons mark and number 17 and initial B



43.

A rare pair of Coalport ice pails, each with two loop handles, very finely London decorated with 'Auricula' 'Orange Tree', 'Thistle' and 'Lavatera', beneath a broad pale yellow band, and gilt line and stiff leaf borders, 6 1/4" high, circa 1805, each titled in red beneath and with rare Coalbrookdale marks in red

Provenance; C R Pilkington Collection

Exhibited; Coalport China Works

Illustrated; Michael Messenger, Coalport, plates 86 and 87

See G A Godden, Coalport and Coalbrookdale Porcelains, plate 26, for a dessert service matching these ice pails in the Collection of Her Majesty The Queen





WWW.ALBERTAMOR.CO.UK