



BY APPOINTMENT TO  
H M THE QUEEN  
SUPPLIERS OF 18<sup>TH</sup> CENTURY PORCELAINS

# ALBERT AMOR LTD

## Recent Acquisitions

AUTUMN 2010



**37 Bury Street, St James's, London SW1Y 6AU**

Telephone: 0207 930 2444 Fax: 0207 930 9067

**Monday 27th September to  
Thursday 14th October 2010**

9.30am until 5.30pm

Saturdays and Sundays closed

## FOREWORD

I am delighted to send to you this catalogue of our Recent Acquisitions, showing just a small part of the stock on display in Bury Street.

The market for fine English Porcelain has remained strong even in these uncertain times, and we were delighted with the enthusiastic response to our March Exhibition of porcelain from a Private Collection. Many of the pieces in the current catalogue have interesting provenances, either from old family collections such as the Spencers at Althorp or the Forbes family at Castle Newe, or famous collections such as Zeisler, Joel, Godden or Wrightsman.

Amongst the blue and white are a number of pieces we acquired privately from a collection formed over 30 years ago, including number 1, the small Landslip bowl. From the Godden Collection, the pair of Liverpool mugs, number 8, are fantastically well moulded in relief, and the Warbler bowl, number 19, again from a Private Collection, is one of the best examples I have seen.

Polychrome Worcester includes a number of rarities with dry blue decoration, including the sauce tureen, cover stand and very rare ladle, number 34, and the vase and cover, number 35. I particularly like the pair of Giles decorated Blind Earl plates, number 28, which in addition to the normal butterflies and insects are amusingly painted with ladybirds and little black bugs.

Chelsea is well represented in this catalogue, the small octagonal bowl, number 36, again acquired directly from a private collection, and especially well painted inside and out, the pair of sunflower dishes, number 40, always a delightful model, and the pair of plates, number 44 with wonderful bold painting. The pair of Chelsea figures, number 38, are a rare model, and the pair of Imperial Shepherd and Shepherdess, from the renowned Joel Collection are amongst the most spectacular made by any English factory in the 18th century.

Derby includes the rare model of a white Dove, last exhibited by us in 2000, and the rare and wonderfully shaped pair of Mulberry leaf shaped chamber candlesticks, number 54, not seen on the market since 1967!

The catalogue concludes with the fine garniture of bough pots, number 61, with wonderful painted decoration, sometimes attributed to the Mansfield workshops, and the exceptionally well modelled group of five Furstenburg busts, number 62, from the Collection of the Royal House of Hanover. I could not resist the Castelli pieces, numbers 63-67, which combine wonderful painting (especially number 63 with the lion) with an interesting provenance.

I do hope you enjoy this catalogue, and that if you cannot visit us, you can call or email if we can tell you more about these pieces.

All exhibits are for sale from the publication of this catalogue.

Mark Law

London, September 2010

1.

A Worcester small round bowl, painted in underglaze blue in Chinese style with the Landslip pattern, 4 ¾" diameter, circa 1760, crescent mark.

Provenance: English Private Collection.

See Brnayan, French and Sandon, I.D.21, for a teapot in this pattern.



2.

A Worcester double lipped sauceboat, the two 'C' scroll handles with 'monkey head' finials, painted in underglaze blue with a Chinese river landscape, flowers and diaper panels, the exterior painted with birds, figures and flowers, within leaf moulded roundels, the rim with a diaper band, 8 ¾" wide, circa 1755, workman's mark.

Provenance: Godden Reference Collection.

Illustrated: Godden (G), English Blue and White Porcelain, colour plate 35, and plates 150-151.





3.

A Worcester cabbage leaf moulded 'Dutch' jug, the 'C' scroll loop handle with scroll thumbpiece, painted in underglaze blue with scrolling flowers and leaves, insects and birds in flight, the handle painted with three birds, 11" high, circa 1755, workman's mark.

Provenance: English Private Collection.

See Branyan, French and Sandon, I.E.21, for a similar jug.



4.

A Worcester slender coffee cup, with notched loop handle, painted in underglaze blue with the Prunus Root pattern, the interior with flowersprays and an insect, 2 1/2" high, circa 1755, workman's mark.

Provenance: English Private Collection.

5.

A Worcester coffee cup, with notched loop handle, painted in underglaze blue with the Narcissus pattern, 2 1/2" high, circa 1765, crescent mark.

Provenance: English Private Collection.

6.

A Worcester coffee cup, with notched loop handle, painted in underglaze blue with the Rock Strata Island pattern, 2 1/2" high, circa 1770, crescent mark.

Provenance: English Private Collection.



7.  
A Caughley Low  
Chelsea Ewer, printed  
in underglaze blue with  
fruits, flowers and  
leaves, beneath a blue  
line rim, 4 ½" long,  
circa 1780, no mark.

Provenance: English  
Private Collection.



8.  
A pair of Liverpool baluster shaped mugs, each with scroll handle, painted in underglaze blue with  
Chinese river landscapes, within scroll moulded cartouches, on a flower and scroll moulded ground,  
beneath a diaper band, 4" high, circa 1765, probably Philip Christian and Co.

Provenance: Godden Reference Collection.

Illustrated: Godden (G), English Blue and White Porcelain, colour plate 86, and plate 423.

Exhibited: Liverpool Porcelain Exhibition, Phillips London, 1997.



- 9.**  
A Liverpool baluster shaped cream jug, the leaf moulded scroll handle with serpent terminal, moulded in bold relief with an early version of the 'Profile Bud' pattern, and painted in underglaze blue with simple flowers and leaves, on gadrooned round foot, 4 ¼" high, circa 1770-75, John and Jane Pennington's Factory, no mark.

See Watney (B), Liverpool Porcelain, figure 320 for a similar jug.

- 10.**  
A Liverpool baluster shaped sparrow beak jug, with notched loop handle, painted in underglaze blue with a bird on a flowering branch, in Chinese style, beneath a diaper band, 4" high, circa 1760, no mark.



- 11.**  
A Worcester small geranium leaf moulded butterboat, painted in underglaze blue with the 'Butterboat Mansfield' pattern, 3 ½" long, circa 1758-60, workman's mark.

Provenance:  
Godden Reference  
Collection.

- 12.**  
A rare Caughley leaf shaped pickle dish, printed in underglaze blue with berries and leaves, within a feuille de choux border, 3 ¾" wide, circa 1785, blue printed C mark.

Provenance: English Private Collection.

See Godden (G), Caughley and Worcester Porcelains, figure 139, for a larger Caughley leaf shaped dish similarly printed.



**13.**

A Worcester cabbage leaf moulded jug, with 'C' scroll handle and mask spout, printed in underglaze blue with the Passion Flower Sprays pattern, 9" high, circa 1765, crescent mark.

See Branyan, French and Sandon, II.C.8, for a similar jug in this rare pattern.



**14.**

A Worcester cabbage leaf moulded jug, with 'C' scroll handle and mask spout. printed in underglaze blue with the Parrot Pecking Fruit pattern (Second Version), beneath a cell diaper band, 10 1/2" high, circa 1775, disguised numeral mark.

**15.**

A Bow small plate, painted in underglaze blue with the 'Jumping Boy' pattern, in Chinese style, within a roundel, the border with precious objects, within a flower panelled diaper band, 7" diameter, circa 1758-60, no mark.

Provenance: Paul Zeisler Collection.

Exhibited: Albert Amor Limited, The Zeisler Collection, 1986.



**16.**

A Worcester flared faceted creamboat, with 'C' scroll handle, painted in underglaze blue with the Prunus Root pattern, 4" long, circa 1756, workman's mark.

**17.**

A Worcester flared round patty pan, with flat rim, printed in underglaze blue with the Early Flowering Plants pattern, 4 7/8" diameter, circa 1760, crescent mark.

See Branyan, French and Sandon, II.C.2 for a similar patty pan.

**17a.**

A Worcester creamboat, with 'C' scroll handle, painted in underglaze blue with the Two-Porter Landscape pattern, within scroll moulded cartouches, beneath a scroll moulded rim, 4 5/8" long, circa 1758, workman's mark.



- 18.**  
A Worcester oval sauce tureen and cover, with two shell shaped handles and fruit knob, painted in underglaze blue with the Rubber Tree Plant pattern, in Chinese style, 4 3/4" high, circa 1775, pseudo Chinese four character mark.

Provenance: Zorensky Collection.  
English Private Collection.

See Branyan, French and Sandon, I.E.47, for a shell shaped dish in this uncommon pattern.



- 19.**  
A Worcester round bowl, painted in underglaze blue with The Warbler pattern, with diaper and flowerhead border, 6" diameter, circa 1755-57, workman's mark.

Provenance: English Private Collection.

See Branyan, French and Sandon, I.C.4, for a similar bowl in this pattern.





20.  
A Worcester lobed oval spoon tray, with two 'twig' loop handles, moulded in relief with roses and leaves, in 'Blind Earl' style, and painted in dry blue enamel with scattered flowers, within a gilt dentil rim, 6 <sup>5</sup>/<sub>8</sub>" wide, circa 1772, no mark.



21.  
A Worcester teacup and saucer, the cup with scroll handle, painted in the London atelier of James Giles in shades of green enamel with flowersprays and scattered flowers, including a 'divergent' tulip, within gilt line borders, circa 1772, blue crossed swords and numeral 9 marks.



22. A pair of Worcester plates, each painted in kakiemon palette with a long tailed bird perched on rockwork, and flowering branches, the broad blue ground border with gilt leaves, within a gilt leaf and diaper band, 7 ½" diameter, circa 1772, script W marks.

The 'Sir Joshua Reynolds' Pattern.



23. A Worcester round bowl, from the Bodenham Service, finely painted in coloured enamels with Chinese figures in landscapes, within gilt cartouches, and with mirror shaped panels of puce and iron red flowers and leaves, on a blue scale ground, 6" diameter, circa 1768, rare blue painted B mark.

Provenance: Earl Spencer, Althorp House, Northamptonshire.

One other bowl in this pattern is known, in the Frank Lloyd Collection at the British Museum.



**24.**  
A Worcester teabowl, coffee cup and saucer, transfer printed in black with Les Garçon Chinois, after Pillement, the reverse of the teabowl and coffee cup with an Oriental figure seated in a pavilion, within black line borders, circa 1757-59, no marks.

Provenance: The Forbes Family, Castle Newe, Aberdeenshire.

The original copper plate, attributed to Hancock, is in the Museum of Worcester Porcelain.



**25.**  
A Worcester saucer dish, transfer printed in black with Les Garçons Chinois, after Pillement, within a black line border, 7 ¼" diameter, circa 1757-59, no mark.

Provenance: The Forbes Family, Castle Newe, Aberdeenshire.





**26.**  
 A Worcester round bowl, printed in black with Les Garçons Chinois, Le Chalet Double and Le Pont Chinois, after Pillement, beneath a black line rim, the interior printed with swans, 5 3/4" diameter, circa 1757-59, no mark.

Both Le Chalet Double and Le Pont Chinois are listed in Cook, items 22 and 86. They are also illustrated in *The Ladies Amusement* on pages 178 and 179.

Provenance: The Forbes Family, Castle Newe, Aberdeenshire.



**27.**  
 A Worcester ogee shaped chocolate cup and saucer, the cup with pierced scroll handles, painted in dry blue enamel with sprays of flowers and leaves, and scattered flowers, the barbed borders with gilt dentil bands, circa 1770, no marks.



28. A pair of Worcester 'Blind Earl' plates, each moulded in relief with rose buds and leaves, and brightly painted in coloured enamels in the London atelier of James Giles with numerous butterflies and insects, including ladybirds and unusual black bugs, the leaves shaded in green, yellow and pink, within a lobed border with gilt line rim, 7 3/4" diameter, circa 1770, no mark.

Provenance: With dealers' label for D M and P Manheim.



29. A pair of Worcester saucer dishes, each decorated in Imari style with a roundel, within an underglaze blue band, the border with radiating panels of iron red and gilt flowerheads, alternating with blue ground bands, 7 1/2" diameter, circa 1770, blue fret marks.





**30.**  
A Worcester 'Blind Earl' sweetmeat dish, the 'stalk' loop handle moulded in relief with rose bud and leaf terminals, finely picked out in coloured enamels, and painted with a butterfly, 6½" wide, circa 1756-58, no mark.



**31.**  
A Worcester round sucrier and domed cover, with solid turquoise ground, the flower and leaf knob decorated in gilt, within gilt line borders, 5¼" high, circa 1772, no mark.

Provenance: Australian Private Collection.



32.  
A Worcester globular teapot and cover, with loop handle and pointed knob, boldly painted in coloured enamels with numerous scattered flowers, leaves and insects, within iron red and gilt spearhead bands, the handle, knob and spout picked out in puce, 5 3/4" high, circa 1765, no mark.



33.  
A rare pair of Worcester dishes, each in the form of overlapping leaves, and with stalk loop handle with snail terminal, painted in coloured enamels with sprays of flowers and leaves, and scattered flowers, within shaded green and yellow borders, 9 1/2" wide, circa 1772, no marks.

34.

A Worcester oval sauce tureen, cover, stand and ladle, the tureen with two shell shaped handles and fruit knob, painted in dry blue enamel with sprays of flowers and leaves, and scattered flowers, within gilt dentil borders, 9 3/4" wide overall, circa 1772, no marks.



35.

A Worcester flared pot pourri vase and domed cover, with bird knob, pierced with geometric bands and painted in dry blue enamel with bands of flowers and leaves, and scattered flowers, within gilt line and dentil borders, on domed foot, 10 1/4" high, circa 1770-72, no mark.



**36.**

A Chelsea octagonal bowl, painted in coloured enamels with a spray of flowers and leaves, and scattered flowers, the interior with scattered flowerheads and leaves, beneath a brown line rim, 3 ½" diameter, circa 1752-54, stilt marks.

Provenance: English Private Collection.



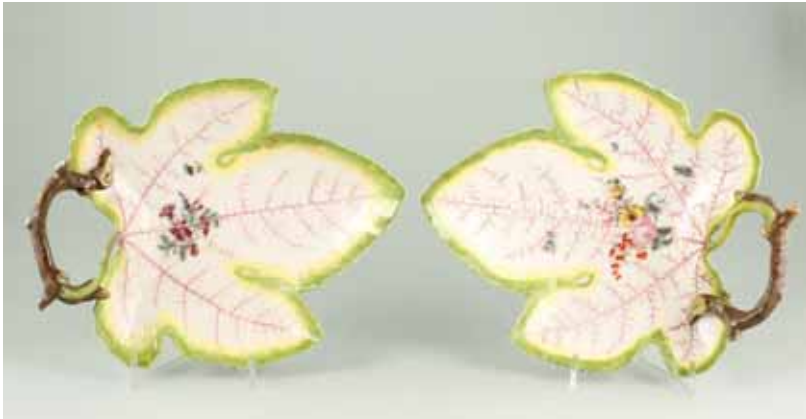
**37.**

A Chelsea oval dish, painted in coloured enamels with a bold spray of flowers and leaves, scattered flowers and a ladybird, the rim with four sprays of flowers, within scroll moulded cartouches, alternating with diaper moulded cartouches, brown line rim, 13" wide, circa 1755-57, red anchor mark.



**38.**  
A pair of Chelsea figures of Bun Sellers, each standing beside a deep tapering basket, the lid held open, he holding a bun, and wearing a black hat, short cloak and brightly coloured tunic, she holding flowers and wearing a turquoise cape, yellow apron and patterned skirt, each on flower applied and scroll moulded base, picked out in gilt, 9 ½" high, circa 1760.

For another pair of these rare figures, see Albert Amor Limited, Birds in Branches Exhibition, 2000, number 6.



**39.**  
A pair of Chelsea leaf shaped dishes, each with stalk loop handle, painted in coloured enamels with a spray of flowers and leaves, and scattered flowers, the veining picked out in puce, within a green and yellow shaded border, 8 ¼" wide, circa 1755.

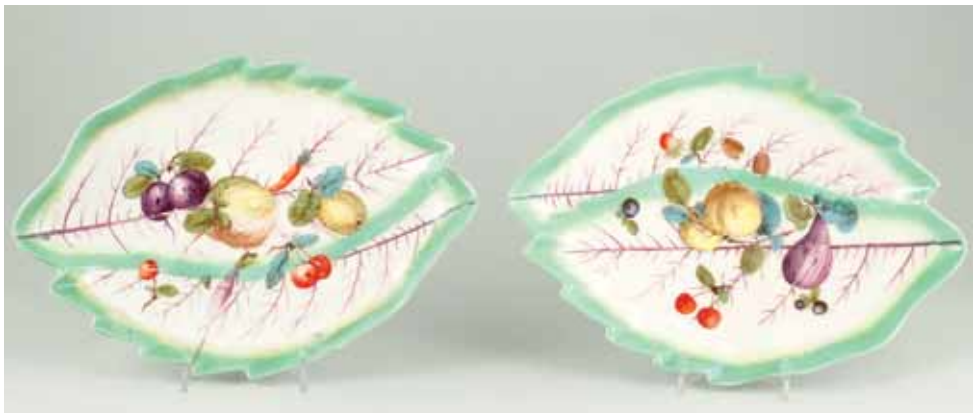
Provenance: Sotheby's London, May 1974, lot 120.  
Willis Collection.





40.  
A pair of Chelsea sunflower shaped dishes, each with stalk loop handle entwined with a ribbon, and one side moulded with flowers and leaves and decorated in coloured enamels, 6" wide, circa 1755, one with red anchor mark.

Provenance: Wrightsman Collection.



41.  
A pair of Chelsea dishes, each in the form of two overlapping leaves, painted in coloured enamels with fruits, nuts and leaves, the veining picked out in puce, within green borders, 8<sup>3/8</sup>" wide, circa 1760, puce anchor marks.

42.

A Chelsea flared small round basket, centrally painted with a yellow rose and mauve Lily buds, within a pierced border of interlinked roundels, the exterior applied with flowerheads picked out in yellow, beneath a brown line rim, 5 7/8" diameter, red anchor mark and decorator's numeral 9, circa 1755.

Provenance: Earl Spencer. Probably acquired by either Georgiana, Countess Spencer (1737-1814), or Frederick, 4th Earl Spencer, either for Spencer House, London, or Althorp House, Northamptonshire, and by family descent.



43.

A Chelsea plate, centrally painted with a shaded moth, within a flower moulded band, the border finely painted in coloured enamels with four sprays of flowers and leaves, alternating with moulded flowers and leaves, brown line rim, 9 1/4" diameter, circa 1755, red anchor mark.



44. A pair of Chelsea plates, boldly painted in coloured enamels, one with an apple and a cut pear and cherries, the other with a lemon, a peach, nuts and berries, the 'feather' moulded border picked out in turquoise and brown, 8 ¼" diameter, circa 1765, brown anchor marks.

Provenance: With dealers' label for D M and P Manheim.



45. A pair of Chelsea large figures of the Imperial Shepherd and Shepherdess, each standing; he holding a crook, a flower in his outstretched arm, she holding a basket of flowers, a posy in her outstretched arm, each richly decorated in coloured enamels, before floral bogage, the flower applied scroll moulded bases picked out in gilt, 13" high, circa 1765, gold anchor marks.

Provenance: H.J. Joel Collection.



46.

A Chelsea model of a hound, finely modelled, and picked out in puce, standing before a flowering tree stump, two game birds at its feet, on flower applied tall scroll moulded base picked out in gilt, 9 ½" high, circa 1765, no mark.

Provenance: English Private Collection.



47.

A pair of Chelsea plates, each boldly painted in coloured enamels with clusters of fruits and leaves, butterflies and insects, the 'feather' moulded rims picked out in green and brown, 8 ½" diameter, circa 1762, brown anchor marks.



**48.**

A Chelsea three compartment scent bottle, in the form of a hen and three chicks, finely painted in coloured enamels, and with chased yellow metal mounts, the underside of the mound base painted in coloured enamels with a spray of flowers and leaves, 2 3/4" high, circa 1758, no mark.

**49.**

A Chelsea two compartment scent bottle, in the form of a young boy, seated holding a hound, simply decorated in coloured enamels, the mound base painted with flowers and leaves, the underside with a flowerspray, the boy's collar set with brilliants, 3" high, circa 1758.

and leaves, the underside with a flowerspray, the boy's collar set with brilliants, 3" high, circa 1758.



**50.**

A St James's Factory scent bottle, in the form of two putto attending a fireplace, decorated in coloured enamels, the oval mound base inscribed in black 'Mon Feu Durerer Toujours', 3 1/2" high, circa 1758-60.

**51.**

A St James's Factory scent bottle, in the form of a putto, standing holding a globe, before a flower applied tree stump, decorated in coloured enamels, the underside of the mound base painted with a pink rose, 2 3/4" high, circa 1758-60.

**52.**

A St James's Factory scent bottle, in the form of a putto working at a grinding wheel, a hound at his feet, decorated in coloured enamels, the underside of the mound base painted with a pink rose, 3" high, circa 1758-60.



**53.**

A Derby model of a white Dove, perched on a flowering tree-stump, the pale yellow wings and tail with purple markings, 3 ½" high, circa 1760, indistinct patch marks.

No other example of this model is recorded, although it is found as the finial on Derby 'frill' vases.

Provenance: Mr and Mrs J H Marlow Collection.

Exhibited: Albert Amor Limited, Birds in Branches Exhibition, 2000, number 25.



**54.**

A pair of Derby Mulberry leaf chamber candlesticks, each with leaf moulded sconce and scroll handle, boldly painted in coloured enamels in 'Moth Painter' style with two cherries, a moth and an insect, within a brown line rim, the handles picked out in gilt, 5 ½" wide, circa 1756.

Provenance: Sotheby's London, October 1967, lot 329.  
English Private Collection.



**55.**

A Derby octagonal dish, finely painted in famille verte palette with a bird perched on a fence, and another in flight, in a garden, within a ruyi head band, the rim with phoenix and flowers, on a green ground band, the reverse with trailing flowersprays, 9 3/4" wide, circa 1780, crowned crossed batons mark in puce.

See Twitchett (J), Derby Porcelain, figure 318, for a Bloor Period Derby dish of this rare shape and decoration, circa 1810-15 in the Charles Littlewood Hill Collection.



**56.**

A Derby small sunflower shaped dish, the bold stalk loop handle with an entwined ribbon; one side moulded with flowers and leaves and decorated in coloured enamels, 4 1/4" wide, circa 1758, no mark

Provenance: Wrightsman Collection.

See Albert Amor Limited, Summer Exhibition 2004, number 65 for a similar dish.

57.

A Bristol biscuit porcelain portrait plaque of a gentleman, head and shoulders, his hair tied with a ribbon, 3" high, circa 1770, no mark, framed and glazed.

Provenance: Colebrooke Collection.  
Alfred Trapnell Collection.



58.

A Longton Hall leaf shaped pickle dish, with green glazed 'ropetwist' loop handle, the underside moulded with veining, painted in coloured enamels in 'Trembley Rose' painter style with a spray of flowers, and scattered flowers, within a brown line rim, 5 1/2" wide, circa 1755, no mark.





**59.**  
A Flight Worcester large fluted oval dish, painted in underglaze blue, iron red, puce and gilt with the Queen Charlotte pattern, 13 ¾" wide, circa 1785, no mark.



**60.**  
A pair of Sevres round dishes, from the Sefton Service, each finely painted in coloured enamels with a ribbon tied basket of flowers, the turquoise ground with two clusters of musical trophies, alternating with two vacant cartouches, and entwined with a laurel garland, gilt line rim, 8 ¼" diameter, circa 1770, painted marks in blue.

Provenance: The Earl of Sefton.  
Eleanor Dorrance Ingersoll.  
President and Mrs Ferdinand Marcos.



**61.**  
 A garniture of three English porcelain 'D' shaped bough pots and pierced covers, each finely painted in coloured enamels with figures in extensive wooded landscapes, within gilt canted panels, and in gilt with flowers and leaves, above a stop fluted band, on three bun feet, the largest 8 1/4'' wide, circa 1800, impressed W\*\*\* mark, probably Enoch Wood.

Provenance: Godden Reference Collection.



**62.**  
 Five Furstenburg biscuit porcelain busts of gentlemen, each on spirally fluted socle picked out in gilt, and square plinth base with stepped foot, 7 3/4'' high, circa 1780, incised and painted marks in blue and impressed titles verso.

Provenance: The Collection of the Royal House of Hanover.

The impressed titles are: 'W.Goeckingk, Locke, A Pope, Iervsalem and G.E.Lessing'.



**63.**  
A Castelli plate, finely painted in coloured enamels with a lion perched on rockwork, two figures below, in an extensive wooded river landscape, with mountains beyond, within brown and ochre bands, 7" diameter, circa 1760, no marks.

Provenance: Earl Spencer, Althorp House, Northamptonshire.



**64.**  
A Castelli plate, finely painted in coloured enamels with two figures on a terrace, in a wooded city landscape with buildings and classical ruins, within brown and ochre bands, 7" diameter, circa 1760, no marks.

Provenance: Earl Spencer, Althorp House, Northamptonshire.





65.

A pair of Castelli plates, each finely painted in coloured enamels with figures and buildings in extensive wooded landscapes, within brown and ochre bands, 7" diameter, circa 1760, no marks.

Provenance: Earl Spencer, Althorp House, Northamptonshire.



**66.** A pair of Castelli teabowls and saucers, each finely painted in coloured enamels, the teabowls with putto, the saucers with a young boy, standing, holding a basket in a garden, and a young woman seated in wooded river landscape, within brown and ochre line borders, circa 1760.

Provenance: Earl Spencer, Althorp House, Northamptonshire.



**67.** A Castelli teabowl and saucer, finely painted in coloured enamels, the teabowl with a putto in a wooded landscape, the saucer with three putto amidst a flower garland, within brown and ochre line borders, circa 1760.

Provenance: Earl Spencer, Althorp House, Northamptonshire.

Back cover detail: No. 61.

