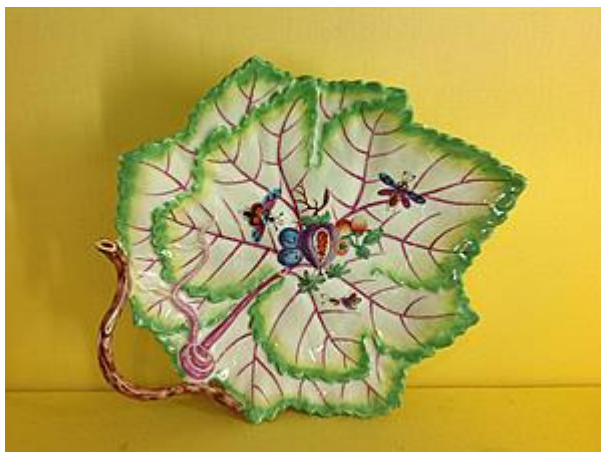




BY APPOINTMENT TO  
HER MAJESTY THE QUEEN  
SUPPLIERS OF 18th CENTURY PORCELAINS



### **A fine Worcester leaf shaped dish**

A Worcester dish, in the form of two overlapping leaves, painted in the London atelier of James Giles with a cluster of fruits and leaves, including a cut fig, strawberries and plums, and with three winged insects, the leaves with puce veining, and edged in yellow and bright green, stalk loop handle, 9" wide, circa 1770, no mark